



# LEDtube Mains T5

## MAS LEDtube 1500mm HE 20W 865 T5

The new Philips Master LEDtube Mains T5 brings simplicity to your lighting project. You no longer need to pay attention to the driver technology. Thanks to a unique design, the Philips MASTER LEDtube Mains T5 directly installs in luminaires operating on mains power. Simple to operate and no need to carry double stock of products! Perfectly safe, reliable and easy to install: Philips MASTER LEDtube Mains T5 is the ideal alternative to standard fluorescent tubes to maximise value over lifetime with high-energy saving and lower maintenance costs.

### Product data

General Information		Power (Rated) (Nom)	
Cap base	G5 [ G5]		20 W
EU RoHS compliant	Yes	Lamp current (max.)	230 mA
Nominal lifetime (nom.)	50000 h	Lamp current (min.)	85 mA
Switching cycle	200,000X	Starting time (nom.)	0.5 s
Technical type	20-35W	Warm-up time to 60% light (nom.)	0.5 s
		Power factor (nom.)	0.9
		Voltage (Nom)	100-240 V
Light Technical		Temperature	
Colour Code	865 [ CCT of 6,500 K]	T-ambient (max.)	45 °C
Beam Angle (Nom)	200 °	T-ambient (min.)	-20 °C
Lamp Luminous Flux 25°C EL (Nom)	3000 lm	T storage (max.)	65 °C
Colour Designation	Cool Daylight	T storage (min.)	-40 °C
Colour Temperature, horizontal (Nom)	6500 K	T-Case maximum (nom.)	75 °C
Lamp Luminous Efficacy EM (Nom)	150.00 lm/W		
Colour consistency	<6	Controls and Dimming	
Colour Rendering Index,horiz (Nom)	80	Dimmable	No
LLMF at end of nominal lifetime (nom.)	70 %		
Operating and Electrical		Mechanical and Housing	
Input frequency	50 to 60 Hz	Lamp Finish	Frosted

# LEDtube Mains T5

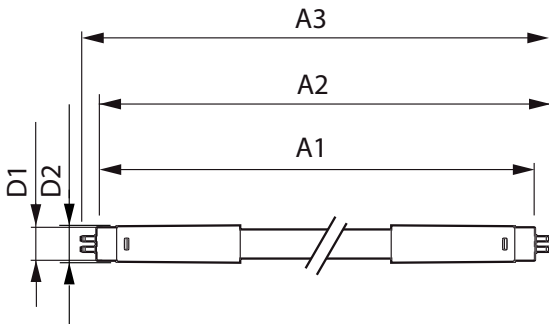
Bulb material	Glass
Product length	1500 mm
<b>Approval and Application</b>	
Energy efficiency label (EEL)	A++
Energy-saving product	Yes
Approval marks	RoHS compliance CE marking KEMA Keur certificate
Energy consumption kWh/1,000 hours	20 kWh

## Product Data

Full product code	871869978359400
-------------------	-----------------

Order product name	MAS LEDtube 1500mm HE 20W 865 T5
EAN/UPC – product	8718699783594
Order code	929002421408
SAP numerator – quantity per pack	1
Numerator – packs per outer box	10
Material no. (12 NC)	929002421408
SAP net weight (piece)	0.176 kg

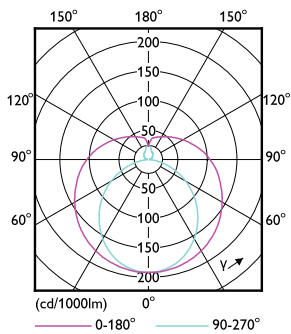
## Dimensional drawing



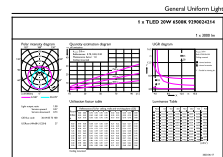
Master LEDtube 1500mm 20W865 G5 EU

Product	D1	D2	A1	A2	A3
MAS LEDtube 1500mm HE 20W 865 T5	15.8 mm	19 mm	1449 mm	1454.9 mm	1463.2 mm

## Photometric data



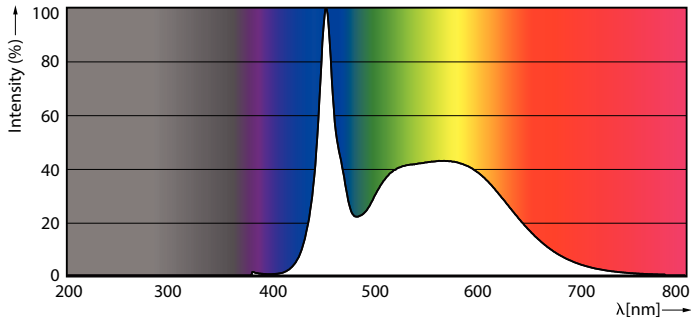
LEDtube MAS 8W G5 1000lm



LEDtube MAS 20W G5 3000lm 865

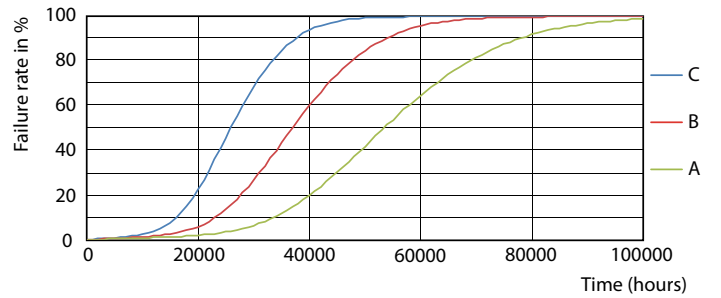
# LEDtube Mains T5

## Photometric data



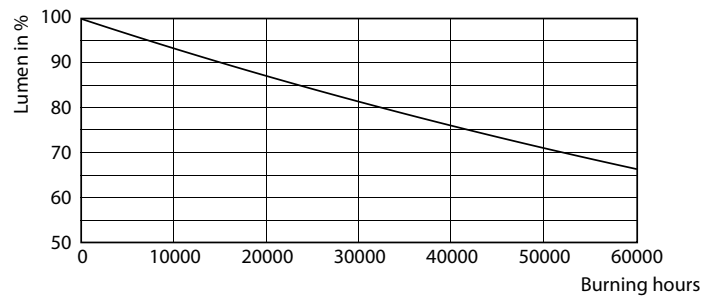
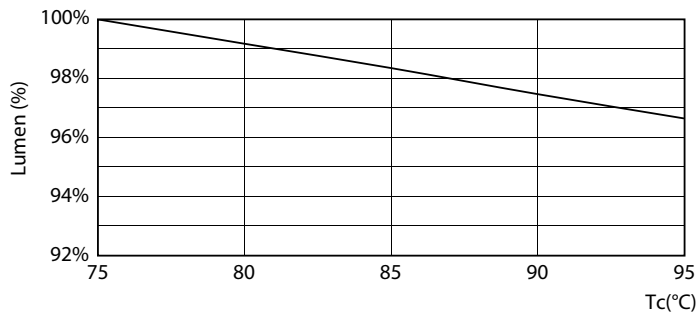
LEDtube MAS 16,5W G5 2500lm 865

## Lifetime



LEDtube 50K-LED

LEDtube 50K FailureRate-LED

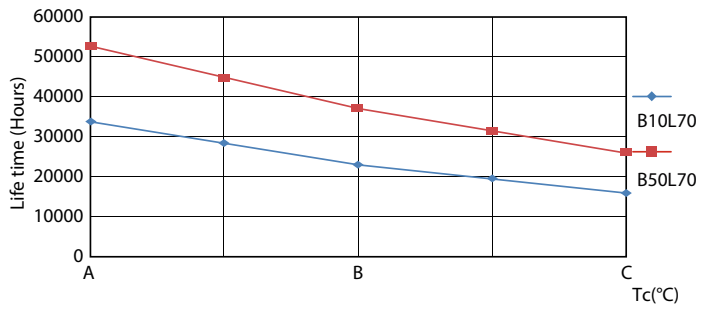


LEDtube 20W 50K LumenVsTc

LEDtube 50K-LMP

# LEDtube Mains T5

## Lifetime



LEDtube 50K LifetimeVsTc-LED

