



# MASTER LEDtube EM/ Mains

## MASTER LEDtube 1500mm HO 18.2W 840 T8

The Philips MASTER LEDtube integrates a LED light source into a traditional fluorescent form factor. Its unique design creates a perfectly uniform visual appearance which cannot be distinguished from traditional fluorescent. This product is the ideal solution for up lighting in general lighting applications.

### Warnings and Safety

• -

### Product data

General Information		Operating and Electrical	
Cap base	G13 ROT (Rotating) [ Medium Bi-Pin Fluorescent]	Input frequency	50 to 60 Hz
EU RoHS compliant	Yes	Power (Rated) (Nom)	18.2 W
Nominal lifetime (nom.)	60000 h	Lamp current (max.)	87 mA
Switching cycle	200,000X	Lamp current (min.)	79 mA
<b>Light Technical</b>		Starting time (nom.)	0.5 s
Colour Code	840 [ CCT of 4,000 K]	Warm-up time to 60% light (nom.)	0.5 s
Beam Angle (Nom)	160 °	Power factor (nom.)	0.9
Lamp Luminous Flux 25°C EL (Nom)	3100 lm	Voltage (Nom)	220-240 V
Colour Designation	Cool White (CW)	<b>Temperature</b>	
Colour Temperature, horizontal (Nom)	4000 K	T-ambient (max.)	45 °C
Lamp Luminous Efficacy EM (Nom)	170.00 lm/W	T-ambient (min.)	-20 °C
Colour consistency	<6	T storage (max.)	65 °C
Colour Rendering Index,horiz (Nom)	83	T storage (min.)	-40 °C
LLMF at end of nominal lifetime (nom.)	70 %	T-Case maximum (nom.)	55 °C

# MASTER LEDtube EM/Mains

## Controls and Dimming

Dimmable	No
----------	----

## Mechanical and Housing

Bulb material	Plastic
Product length	1500 mm

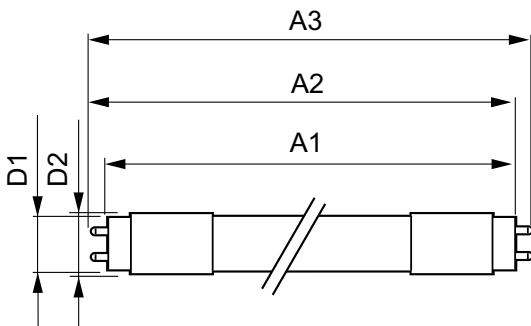
## Approval and Application

Energy efficiency label (EEL)	A++
Energy-saving product	Yes
Approval marks	RoHS compliance CE marking KEMA Keur certificate
Energy consumption kWh/1,000 hours	19 kWh

## Product Data

Full product code	871869959243100
Order product name	MASTER LEDtube 1500mm HO 18.2W 840 T8
EAN/UPC – product	8718699592431
Order code	929001923002
SAP numerator – quantity per pack	1
Numerator – packs per outer box	10
Material no. (12 NC)	929001923002
SAP net weight (piece)	0.450 kg

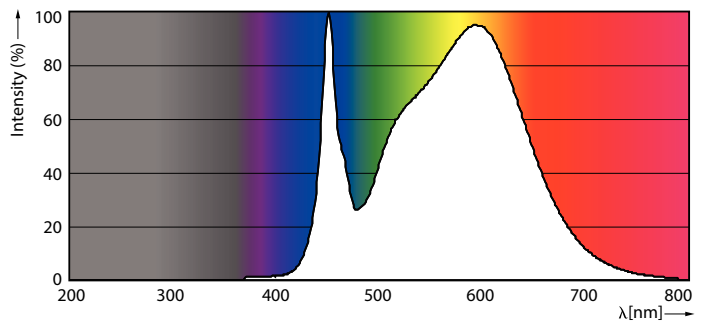
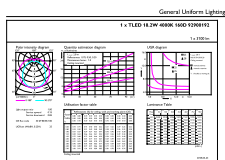
## Dimensional drawing



TLED master HE 3100lm 18.2w 5ft 4000k

Product	D1	D2	A1	A2	A3
MASTER LEDtube 1500mm HO 18.2W 840 T8	25.8 mm	28 mm	1498.8 mm	1505.9 mm	1513 mm

## Photometric data

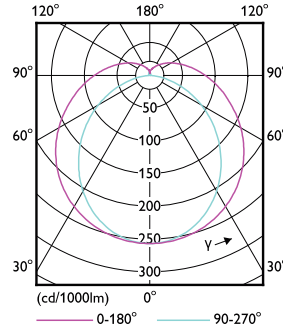
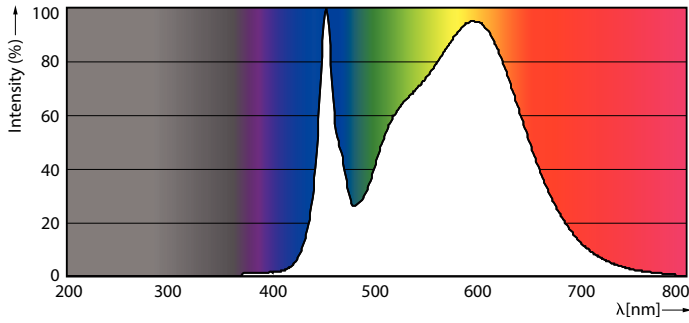


LEDtube MAS HO 18.2W G13 840 16D ND

LEDtube MAS HO G13

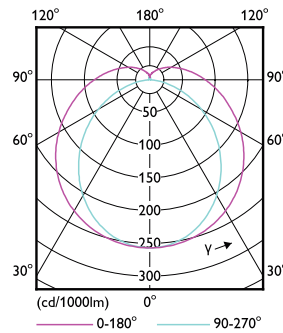
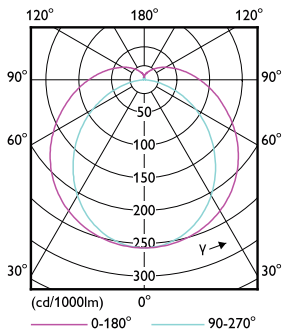
# MASTER LEDtube EM/Mains

## Photometric data



LEDtube MAS HO 12.5W G13 840 16D ND

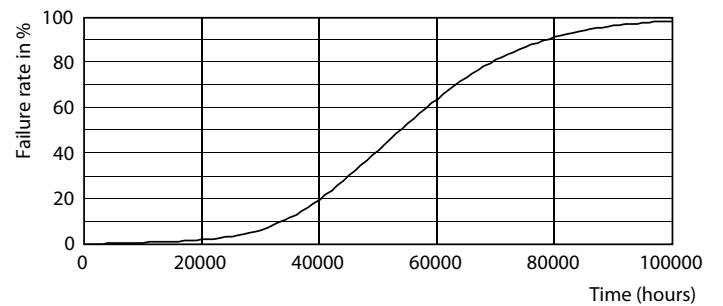
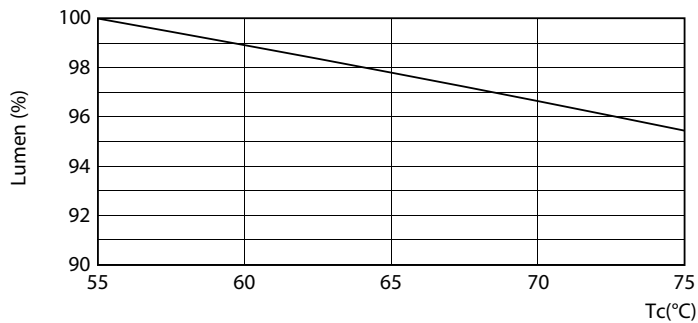
LEDtube MAS HO G13



LEDtube T8 MAS HO G13

LEDtube MAS HO 12.5W G13 830 16D ND

## Lifetime

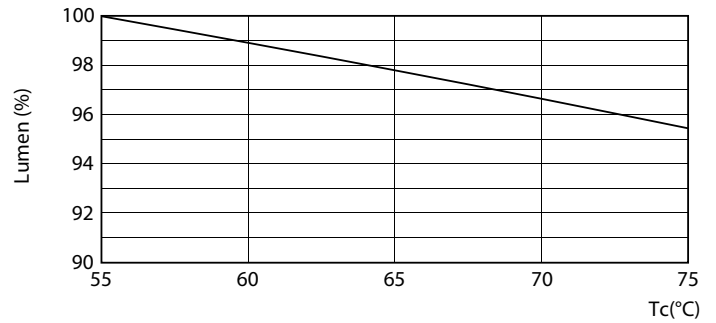
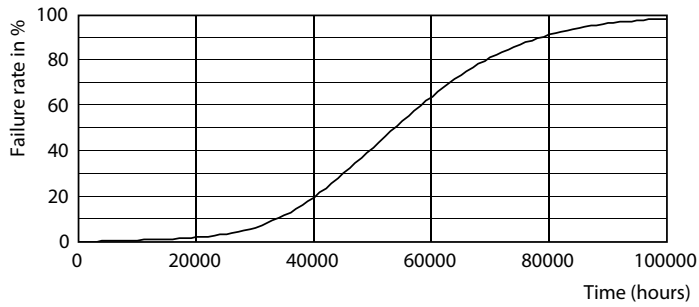


LEDtube T8 MAS HO 18.2W G13

LEDtube MAS HO G13

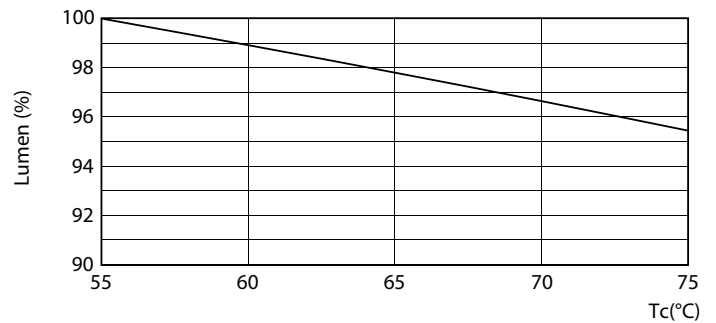
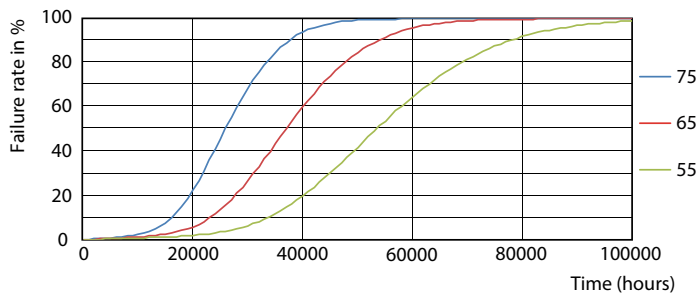
# MASTER LEDtube EM/Mains

## Lifetime



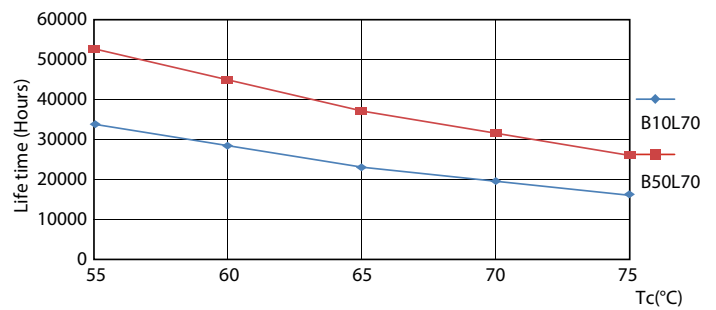
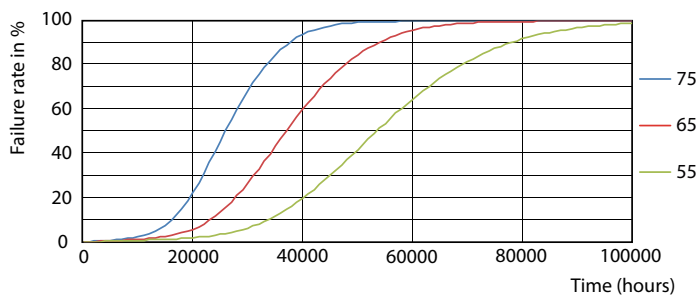
LEDtube T8 MAS HO G13

LEDtube MAS HO 18.2W G13 830 16D ND



LEDtube MAS HO G13

LEDtube MAS HO 18.2W G13

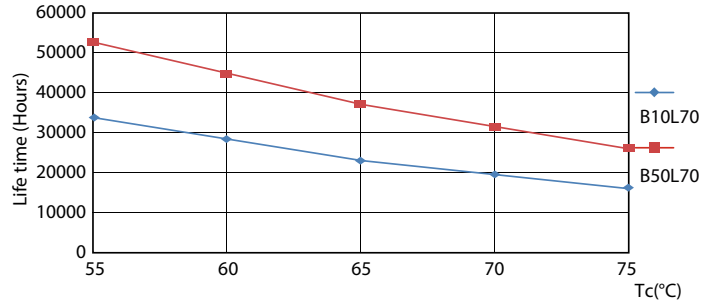
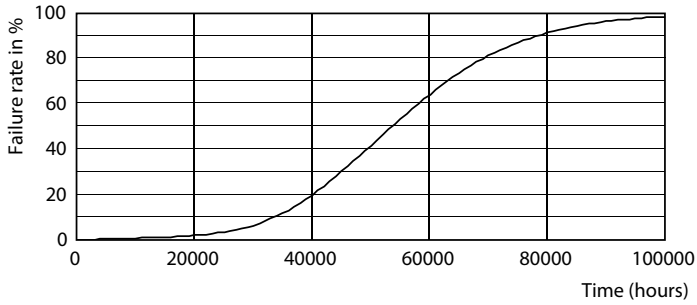


LEDtube MAS HO 12.5W G13 830 16D ND

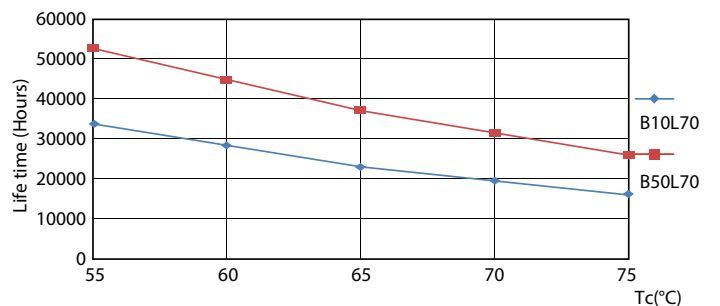
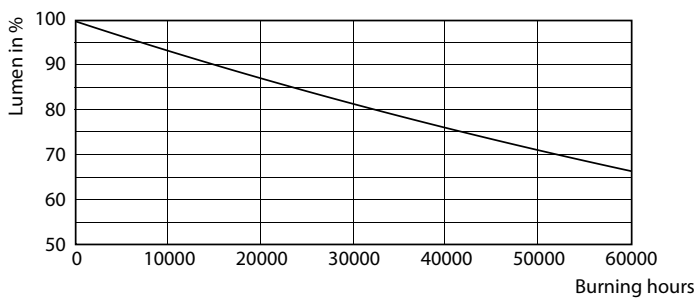
LEDtube T8 MAS HO G13

# MASTER LEDtube EM/Mains

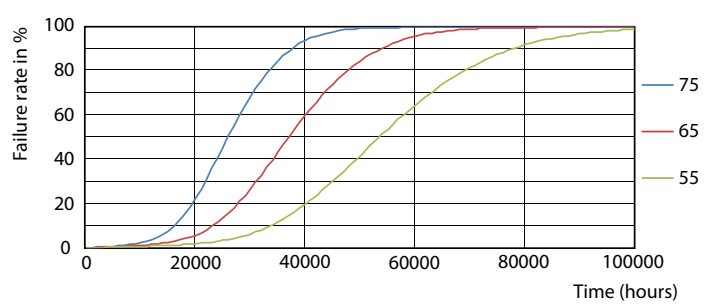
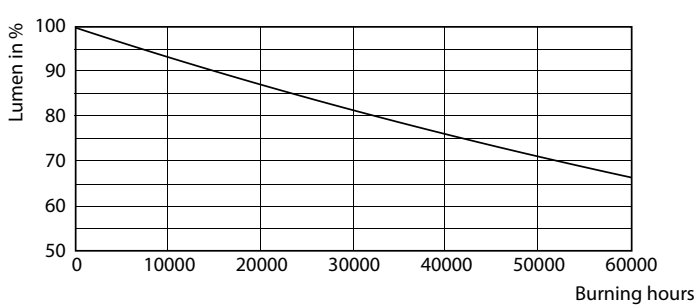
## Lifetime



LEDtube MAS HO 12.5W G13 830 16D ND



LEDtube T8 MAS HO G13



LEDtube MAS HO G13

## MASTER LEDtube EM/Mains

