



# MASTER LEDtube EM/ Mains

## MASTER LEDtube 1200mm HO 12.5W 865 T8

The Philips MASTER LEDtube integrates a LED light source into a traditional fluorescent form factor. Its unique design creates a perfectly uniform visual appearance which cannot be distinguished from traditional fluorescent. This product is the ideal solution for up lighting in general lighting applications.

### Warnings and Safety

• -

### Product data

General Information		Operating and Electrical	
Cap base	G13 ROT (Rotating) [ Medium Bi-Pin Fluorescent]	Input frequency	50 to 60 Hz
EU RoHS compliant	Yes	Power (Rated) (Nom)	12.5 W
Nominal lifetime (nom.)	60000 h	Lamp current (max.)	59 mA
Switching cycle	200,000X	Lamp current (min.)	54 mA
Light Technical		Starting time (nom.)	0.5 s
Colour Code	865 [ CCT of 6,500 K]	Warm-up time to 60% light (nom.)	0.5 s
Beam Angle (Nom)	160 °	Power factor (nom.)	0.9
Lamp Luminous Flux 25°C EL (Nom)	2100 lm	Voltage (Nom)	220-240 V
Colour Designation	Cool Daylight	Temperature	
Colour Temperature, horizontal (Nom)	6500 K	T-ambient (max.)	45 °C
Lamp Luminous Efficacy EM (Nom)	168.00 lm/W	T-ambient (min.)	-20 °C
Colour consistency	<6	T storage (max.)	65 °C
Colour Rendering Index,horiz (Nom)	83	T storage (min.)	-40 °C
LLMF at end of nominal lifetime (nom.)	70 %	T-Case maximum (nom.)	50 °C

# MASTER LEDtube EM/Mains

## Controls and Dimming

Dimmable No

## Mechanical and Housing

Bulb material Plastic

Product length 1200 mm

## Approval and Application

Energy efficiency label (EEL) A++

Energy-saving product Yes

Approval marks RoHS compliance CE marking KEMA Keur certificate

Energy consumption kWh/1,000 hours 13 kWh

## Product Data

Full product code 871869959239400

Order product name MASTER LEDtube 1200mm HO 12.5W 865 T8

EAN/UPC – product 8718699592394

Order code 929001922802

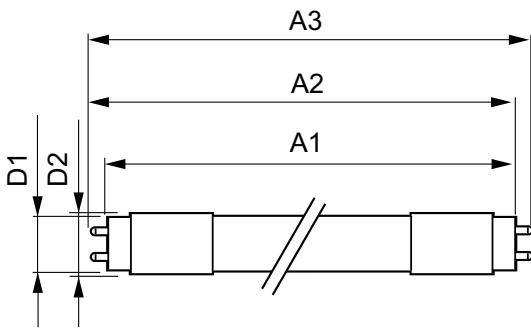
SAP numerator – quantity per pack 1

Numerator – packs per outer box 10

Material no. (12 NC) 929001922802

SAP net weight (piece) 0.270 kg

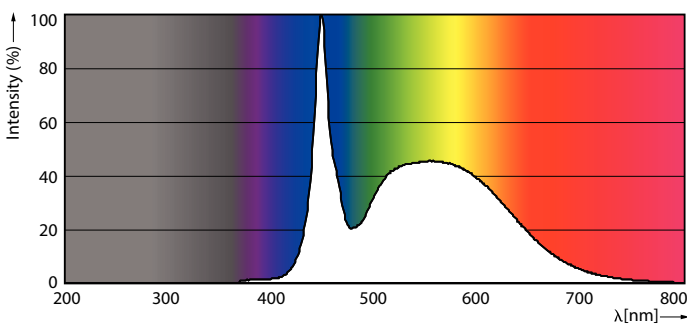
## Dimensional drawing



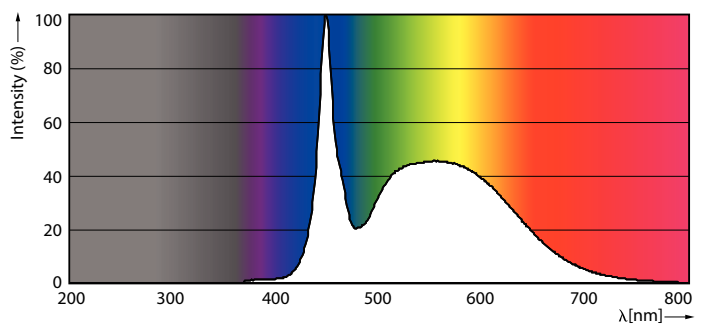
TLED master HE 2100lm 12.35w 4ft 6500k

Product	D1	D2	A1	A2	A3
MASTER LEDtube 1200mm HO 12.5W 865 T8	25.8 mm	28 mm	1198.2 mm	1205.3 mm	1212.4 mm

## Photometric data



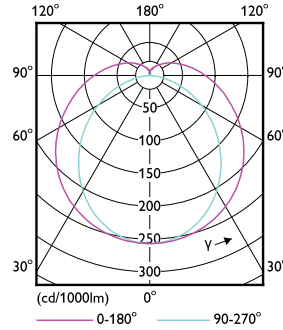
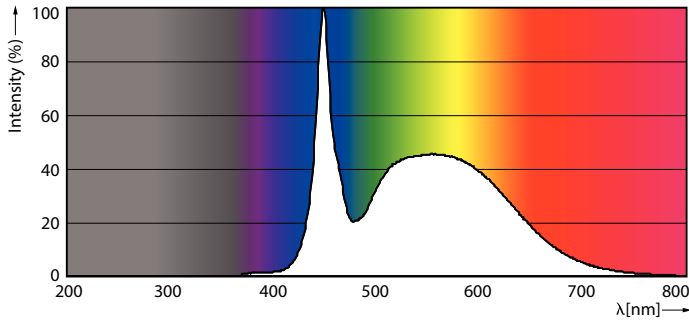
LEDtube T8 MAS HO G13 865



LEDtube MAS HO G13 865

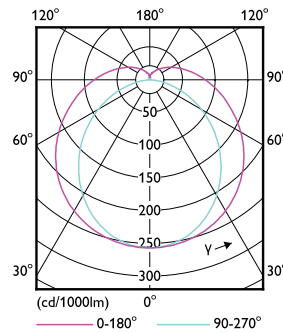
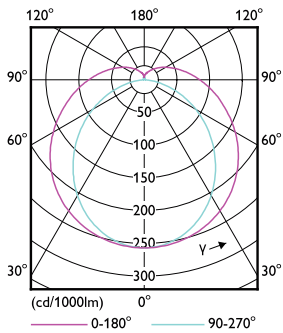
# MASTER LEDtube EM/Mains

## Photometric data



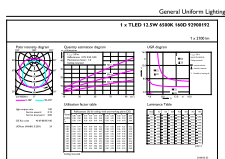
LEDtube MAS HO 12.5W G13 865 16D ND

LEDtube MAS HO G13



LEDtube T8 MAS HO G13

LEDtube MAS HO 12.5W G13 830 16D ND

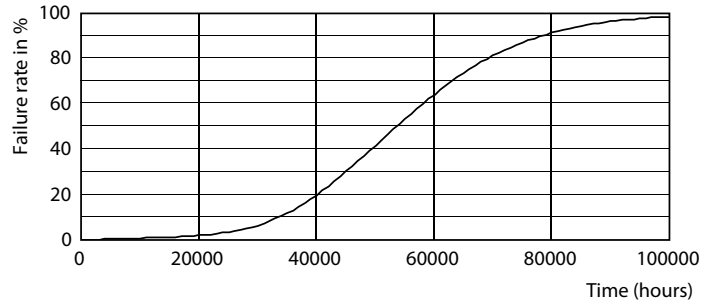
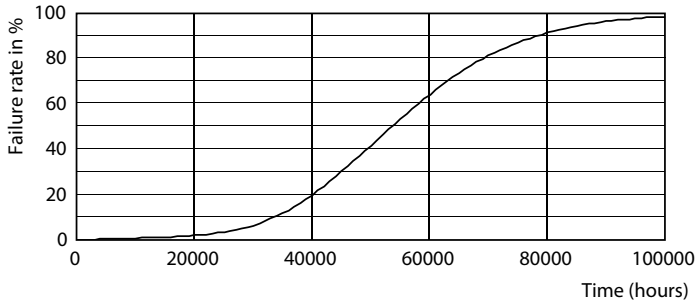


© 2021 Philips Lighting B.V. All rights reserved. Page 11

LEDtube MAS HO 12.5W G13 865 16D ND

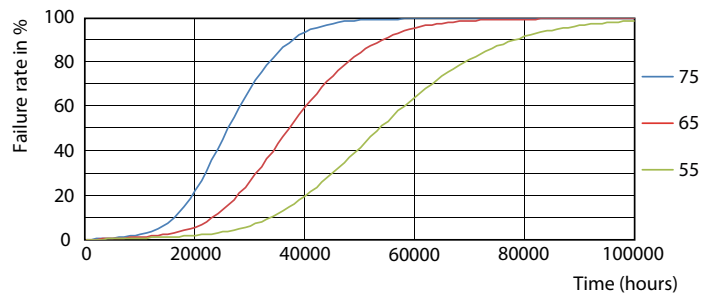
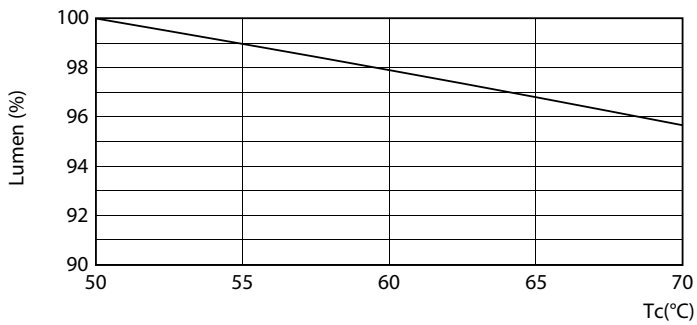
# MASTER LEDtube EM/Mains

## Lifetime



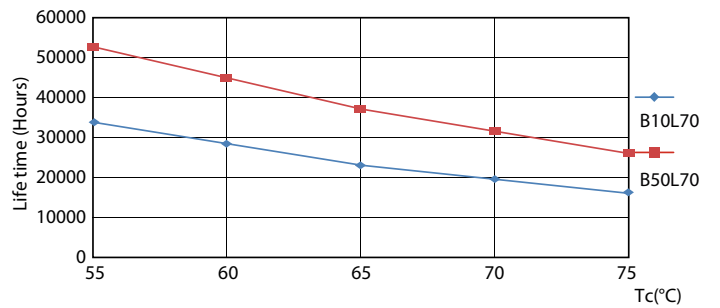
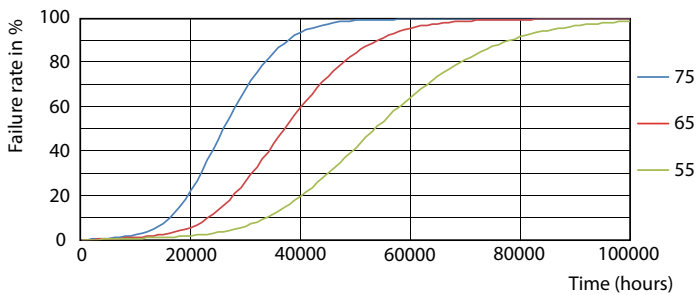
LEDtube MAS HO G13

LEDtube T8 MAS HO G13



LEDtube MAS HO 12.5W G13 830 16D ND

LEDtube MAS HO G13

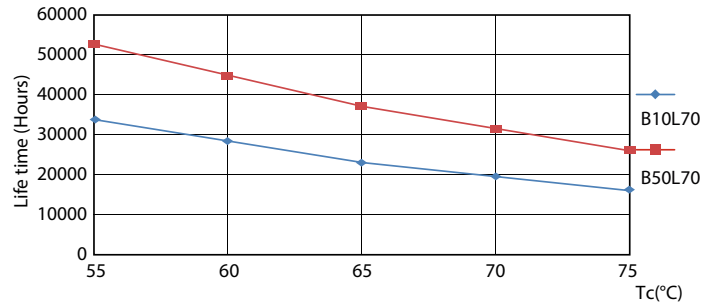
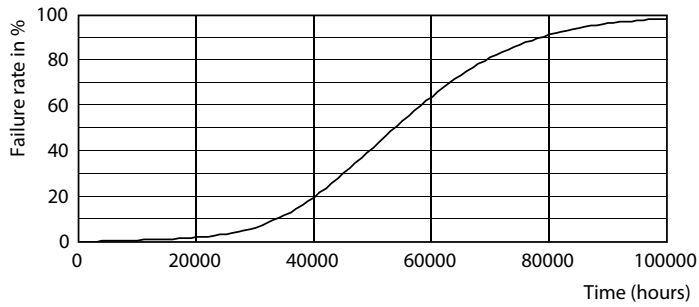


LEDtube MAS HO 12.5W G13 830 16D ND

LEDtube T8 MAS HO G13

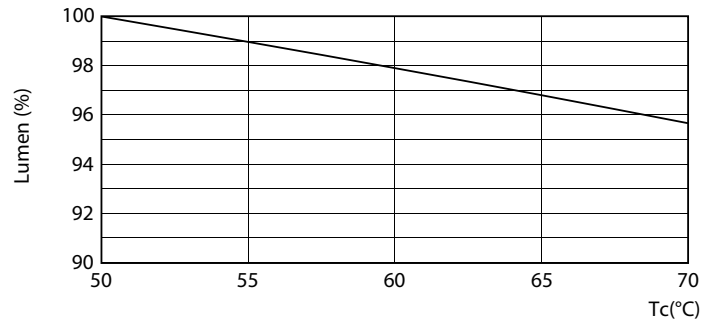
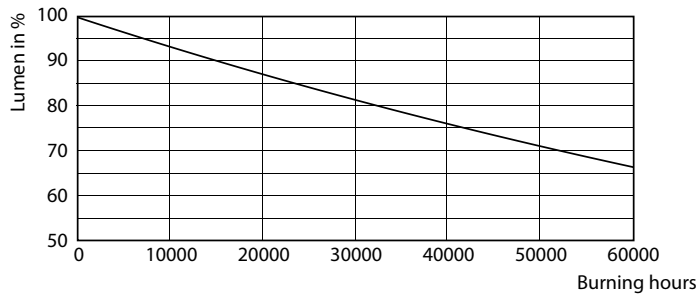
# MASTER LEDtube EM/Mains

## Lifetime



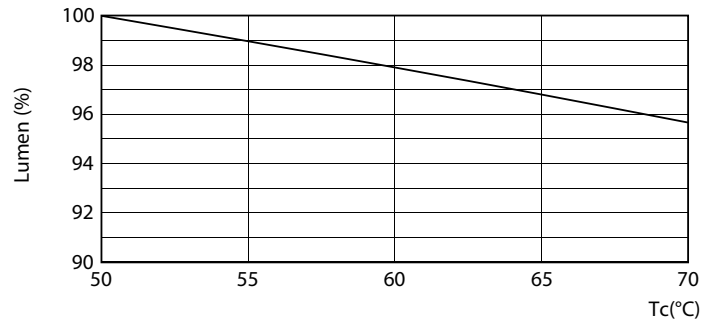
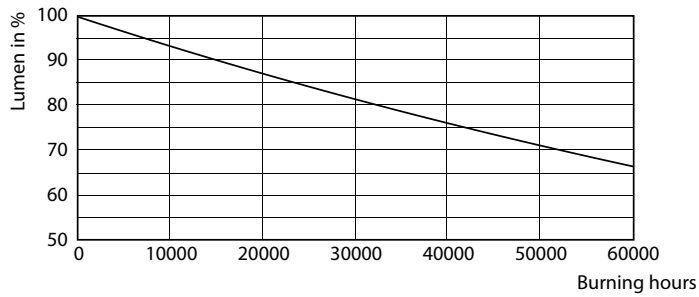
LEDtube MAS HO 12.5W G13 830 16D ND

LEDtube MAS HO 12.5W G13 830 16D ND



LEDtube MAS HO G13

LEDtube MAS HO 12.5W G13

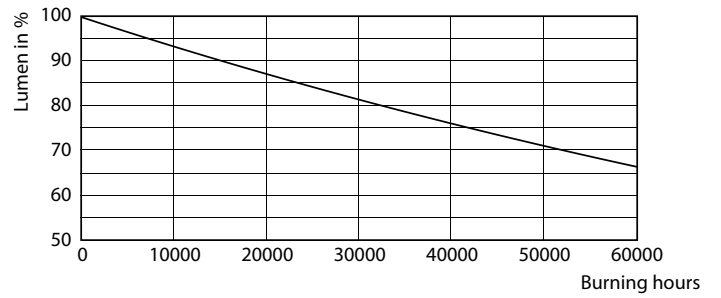
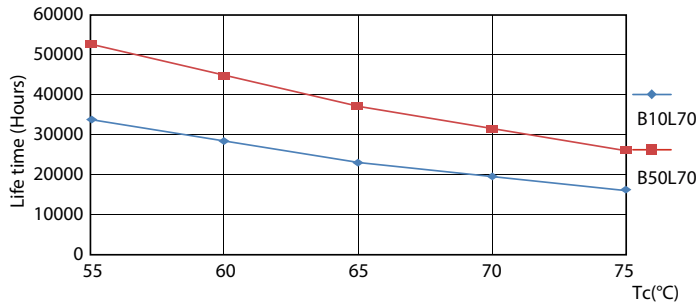


LEDtube T8 MAS HO G13

LEDtube T8 MAS HO 12.5W G13

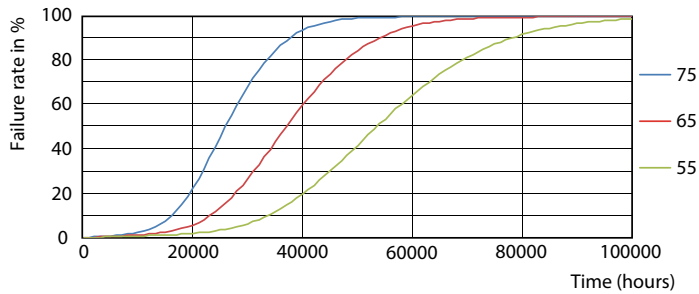
# MASTER LEDtube EM/Mains

## Lifetime



### LEDtube MAS HO G13

### LEDtube MAS HO G13



### LEDtube T8 MAS HO G13

