



# MASTER LEDtube EM/ Mains

## MASTER LEDtube 1200mm HO 12.5W 840 T8

The Philips MASTER LEDtube integrates a LED light source into a traditional fluorescent form factor. Its unique design creates a perfectly uniform visual appearance which cannot be distinguished from traditional fluorescent. This product is the ideal solution for up lighting in general lighting applications.

### Warnings and Safety

• -

### Product data

General Information	
Cap base	G13 ROT (Rotating) [ Medium Bi-Pin Fluorescent]
EU RoHS compliant	Yes
Nominal lifetime (nom.)	60000 h
Switching cycle	200,000X

Light Technical	
Colour Code	840 [ CCT of 4,000 K]
Beam Angle (Nom)	160 °
Lamp Luminous Flux 25°C EL (Nom)	2100 lm
Colour Designation	Cool White (CW)
Colour Temperature, horizontal (Nom)	4000 K
Lamp Luminous Efficacy EM (Nom)	168.00 lm/W
Colour consistency	<6
Colour Rendering Index,horiz (Nom)	83
LLMF at end of nominal lifetime (nom.)	70 %

Operating and Electrical	
Input frequency	50 to 60 Hz
Power (Rated) (Nom)	12.5 W
Lamp current (max.)	59 mA
Lamp current (min.)	54 mA
Starting time (nom.)	0.5 s
Warm-up time to 60% light (nom.)	0.5 s
Power factor (nom.)	0.9
Voltage (Nom)	220-240 V

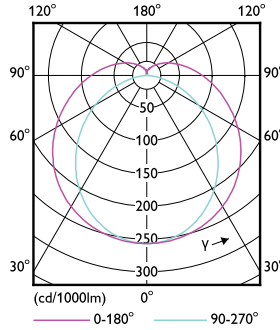
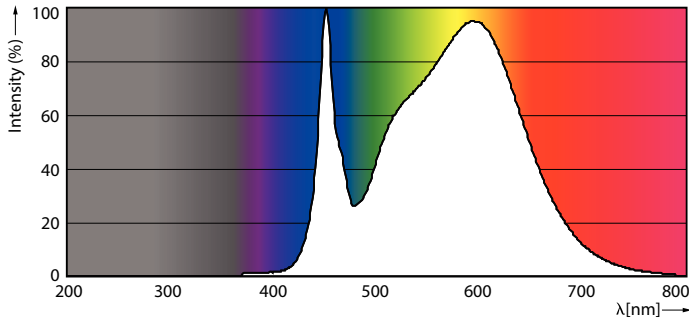
  

Temperature	
T-ambient (max.)	45 °C
T-ambient (min.)	-20 °C
T storage (max.)	65 °C
T storage (min.)	-40 °C
T-Case maximum (nom.)	50 °C



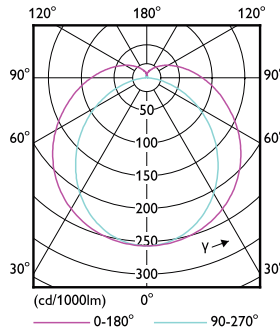
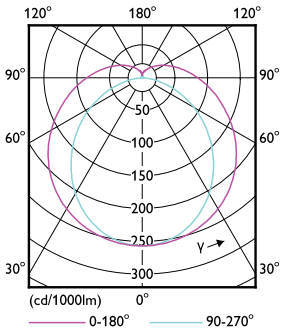
# MASTER LEDtube EM/Mains

## Photometric data



LEDtube MAS HO 12.5W G13 840 16D ND

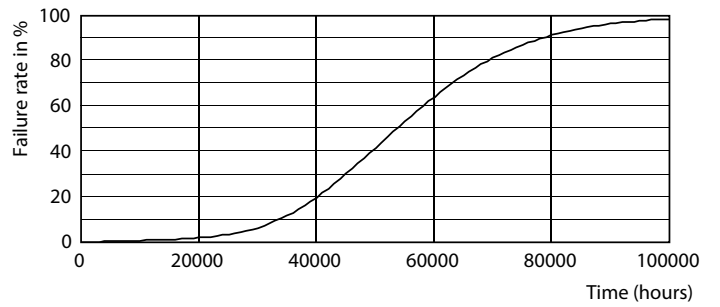
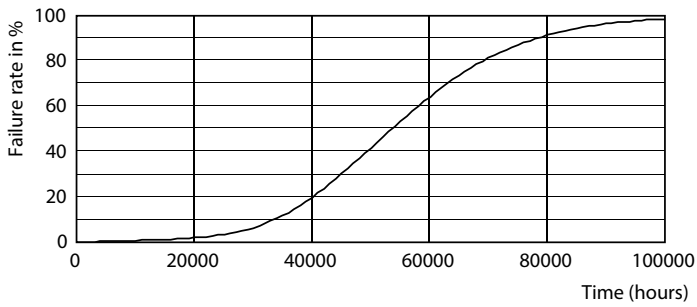
LEDtube MAS HO G13



LEDtube T8 MAS HO G13

LEDtube MAS HO 12.5W G13 830 16D ND

## Lifetime

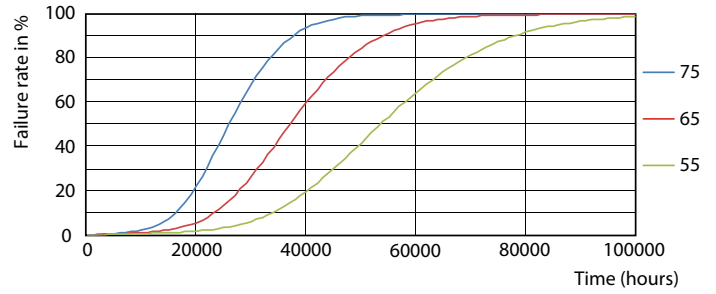
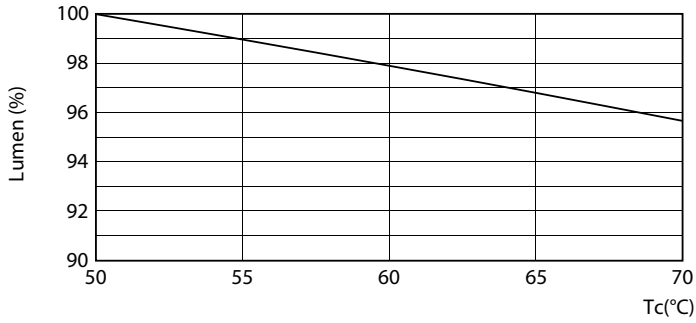


LEDtube MAS HO G13

LEDtube T8 MAS HO G13

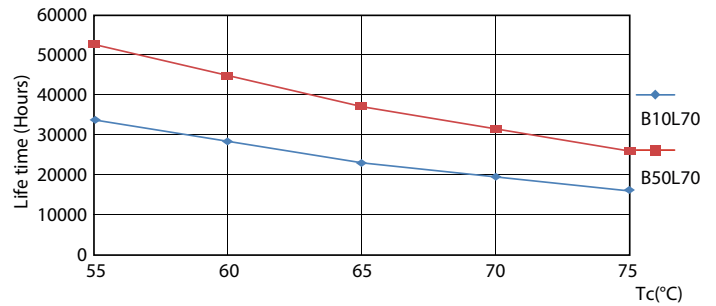
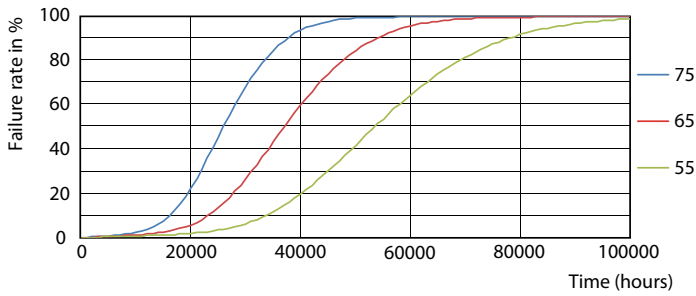
# MASTER LEDtube EM/Mains

## Lifetime



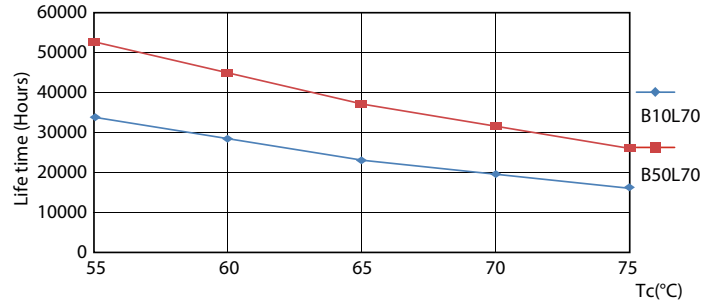
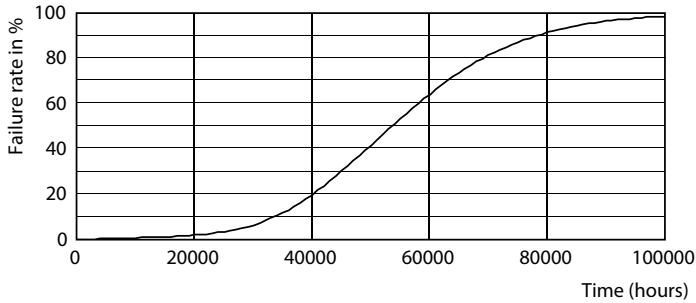
LEDtube MAS HO 12.5W G13 830 16D ND

LEDtube MAS HO G13



LEDtube MAS HO 12.5W G13 830 16D ND

LEDtube T8 MAS HO G13

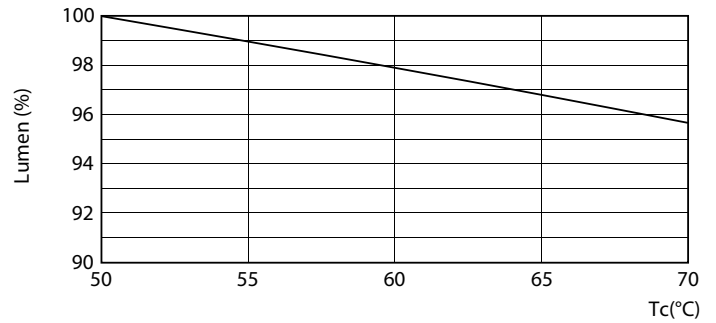
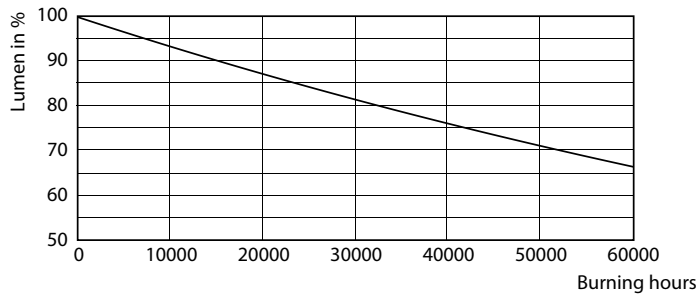


LEDtube MAS HO 12.5W G13 830 16D ND

LEDtube MAS HO 12.5W G13 830 16D ND

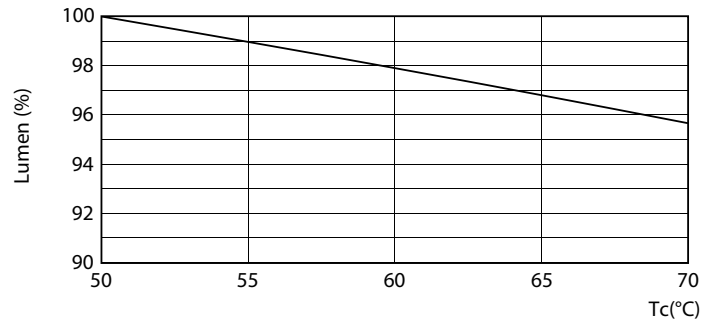
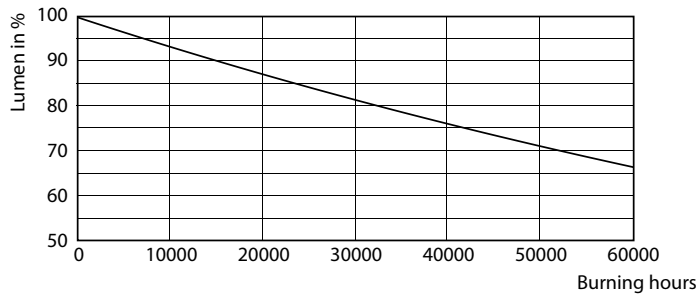
# MASTER LEDtube EM/Mains

## Lifetime



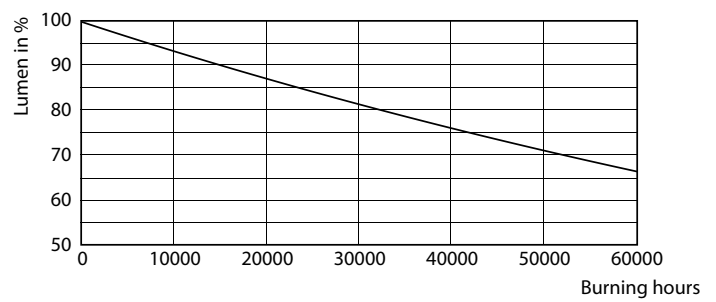
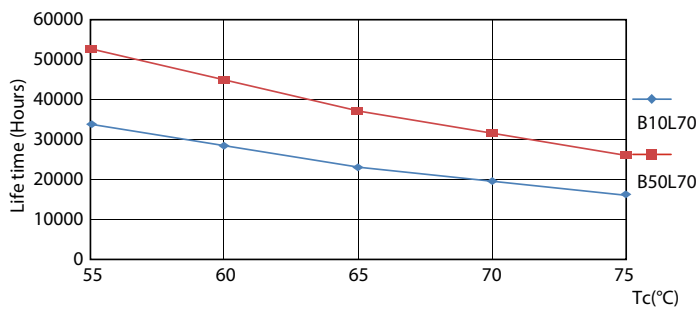
LEDtube MAS HO G13

LEDtube MAS HO 12.5W G13



LEDtube T8 MAS HO G13

LEDtube T8 MAS HO 12.5W G13

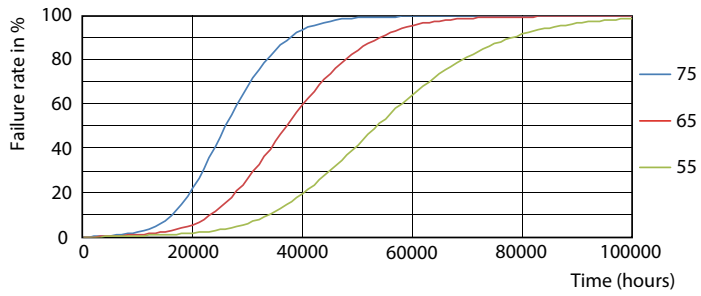


LEDtube MAS HO G13

LEDtube MAS HO G13

# MASTER LEDtube EM/Mains

## Lifetime



LEDtube T8 MAS HO G13

