



CorePro LED PLC 2P

LED PLC 7.5W 865 2P G24d

The CorePro LED PLC 2P integrates a LED light source into a traditional fluorescent form factor. This product is the ideal solution for uplamping in general lighting applications: it meets basic lighting requirements, offers significant energy savings and is environmentally friendly.

Product data

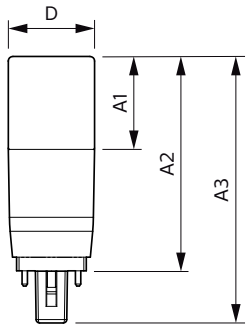
General Information		Starting time (nom.)	
Cap base	G24D [G24d]		0.5 s
EU RoHS compliant	Yes	Warm-up time to 60% light (nom.)	0.5 s
Nominal lifetime (nom.)	15000 h	Power factor (nom.)	0.5
Switching cycle	50,000X	Voltage (Nom)	220-240 V
Light Technical		Temperature	
Colour Code	865 [CCT of 6,500 K]	T-ambient (max.)	45 °C
Beam Angle (Nom)	240 °	T-ambient (min.)	-20 °C
Lamp Luminous Flux 25°C EL (Nom)	806 lm	T storage (max.)	65 °C
Colour Designation	Cool Daylight	T storage (min.)	-40 °C
Colour Temperature, horizontal (Nom)	6500 K	T-Case maximum (nom.)	64 °C
Lamp Luminous Efficacy EM (Nom)	107.00 lm/W	Controls and Dimming	
Colour consistency	<6	Dimmable	No
Colour Rendering Index, horiz (Nom)	80	Mechanical and Housing	
LLMF at end of nominal lifetime (nom.)	70 %	Product length	100 mm
Operating and Electrical		Approval and Application	
Input frequency	50 to 60 Hz	Energy efficiency label (EEL)	Not applicable
Power (Rated) (Nom)	7.5 W	Energy-saving product	Yes
Lamp current (max.)	57 mA	Approval marks	RoHS compliance CE marking KEMA Keur certificate
Lamp current (min.)	57 mA		
Lamp current (nom.)	57 mA		

CorePro LED PLC 2P

Energy consumption kWh/1,000 hours - kWh	
Product Data	
Full product code	871869681020000
Order product name	LED PLC 7.5W 865 2P G24d
EAN/UPC – product	8718696810200
Order code	929001879108

SAP numerator – quantity per pack	1
Numerator – packs per outer box	10
Material no. (12 NC)	929001879108
SAP net weight (piece)	0.030 kg

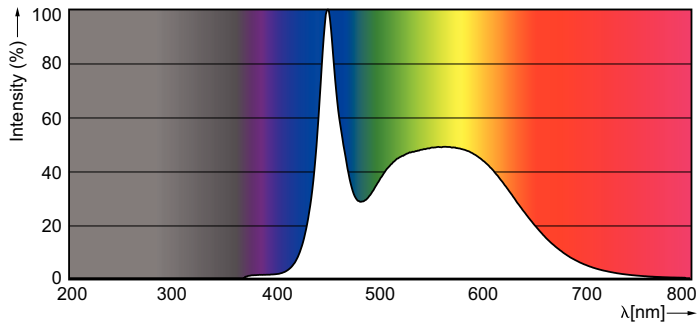
Dimensional drawing



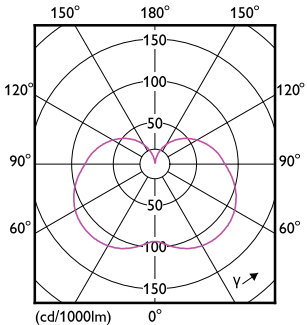
PLED PLC 7.5-13W 800lm 6500K G24d

Product	D	A1	A2	A3
LED PLC 7.5W 865 2P G24d	37.2 mm	40 mm	92.5 mm	115 mm

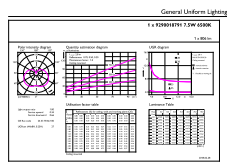
Photometric data



CorePro LEDtube 1500mm 20W G13 865



LEDtube PLC 7.5W G24D 830 2P 24D ND

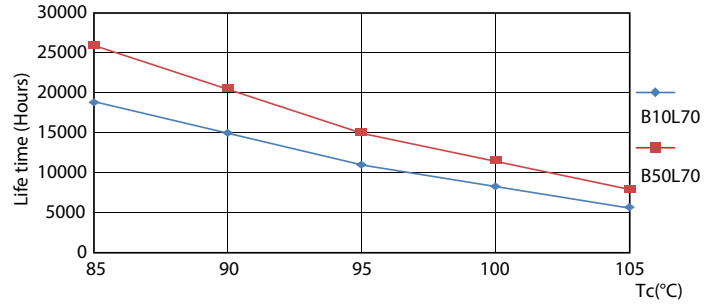
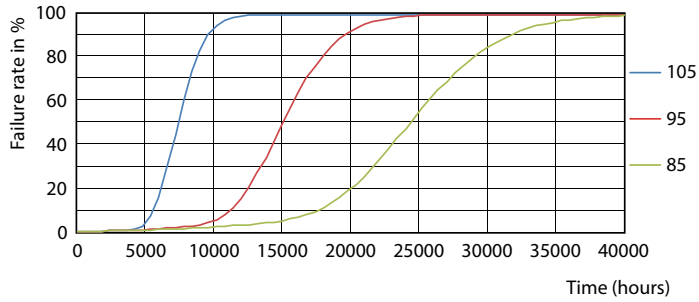


MSL 2019/04/01 Page 11/11

LEDtube PLC 7.5W G24D 865 2P 24D ND

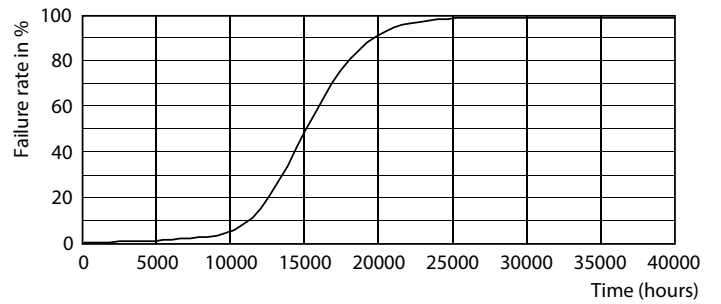
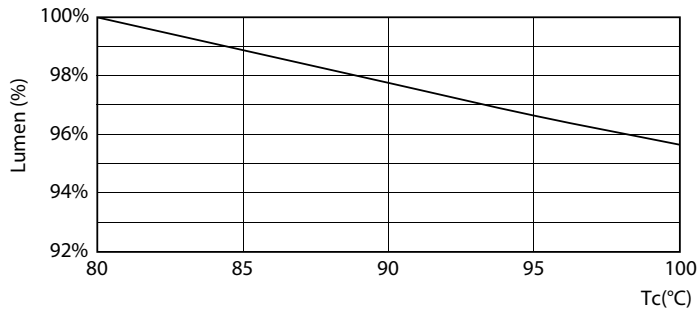
CorePro LED PLC 2P

Lifetime



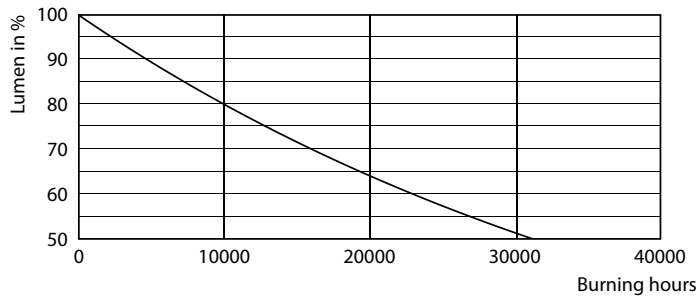
LEDtube PLC 7.5W G24D 830 2P 24D ND

LEDtube PLC 7.5W G24D 830 2P 24D ND



LEDtube PLC 7.5W G24D 830 2P 24D ND

LEDtube PLC 7.5W G24D 830 2P 24D ND



LEDtube PLC 7.5W G24D 830 2P 24D ND

CorePro LED PLC 2P

