



# MASTER LEDtube InstantFit HF T5

## Master LEDtube HF 1200mm HE 16.5W 865 T5

Philips MASTER LEDtube InstantFit T5 integrates a LED light source into a traditional fluorescent form factor. Its unique design creates a perfectly uniform visual appearance which cannot be distinguished from traditional fluorescents. The Philips MASTER LEDtube InstantFit T5 is the ideal solution for customers who have higher light output requirements and want to maximise value over the lifetime. The full energy savings & longer lifetime result in attractive payback times and TCO benefits.

### Product data

#### General Information

Cap base	G5 [ G5]
EU RoHS compliant	Yes
Nominal lifetime (nom.)	50000 h
Switching cycle	50,000X

#### Light Technical

Colour Code	865 [ CCT of 6,500 K]
Beam Angle (Nom)	200 °
Lamp Luminous Flux 25°C EL (Nom)	2500 lm
Colour Designation	Cool Daylight
Colour Temperature, horizontal (Nom)	6500 K
Lamp Luminous Efficacy EM (Nom)	151.00 lm/W
Colour consistency	<6
Colour Rendering Index,horiz (Nom)	83
LLMF at end of nominal lifetime (nom.)	70 %

#### Operating and Electrical

Input frequency	35000-70000 Hz
-----------------	----------------

Power (Rated) (Nom)	16.5 W
Lamp current (max.)	350 mA
Lamp current (min.)	150 mA
Starting time (nom.)	0.5 s
Warm-up time to 60% light (nom.)	0.5 s
Power factor (nom.)	0.9
Voltage (Nom)	90-130 V

#### Temperature

T-ambient (max.)	45 °C
T-ambient (min.)	-20 °C
T storage (max.)	65 °C
T storage (min.)	-40 °C
T-Case maximum (nom.)	65 °C

#### Controls and Dimming

Dimmable	No
----------	----

# MASTER LEDtube InstantFit HF T5

## Mechanical and Housing

Bulb material	Glass
Product length	1200 mm

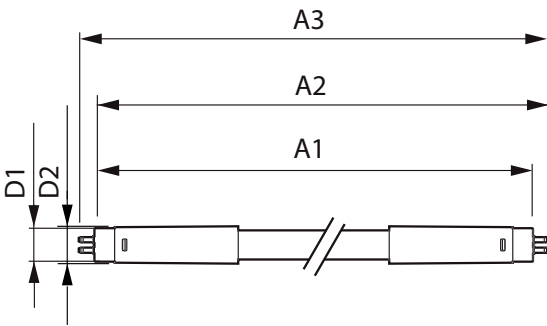
## Approval and Application

Energy efficiency label (EEL)	A++
Energy-saving product	Yes
Approval marks	CE marking RoHS compliance KEMA Keur certificate
Energy consumption kWh/1,000 hours	20 kWh

## Product Data

Full product code	871869674333100
Order product name	Master LEDtube HF 1200mm HE 16.5W 865 T5
EAN/UPC – product	8718696743331
Order code	929001391202
SAP numerator – quantity per pack	1
Numerator – packs per outer box	10
Material no. (12 NC)	929001391202
SAP net weight (piece)	0.159 kg

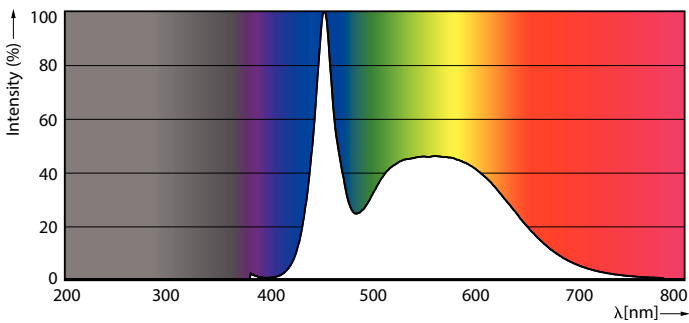
## Dimensional drawing



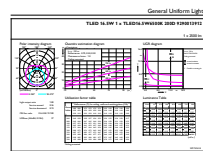
TLED 1200mm 230V14W-28W 2100lm 160D 650

Product	D1	D2	A1	A2	A3
Master LEDtube HF 1200mm HE 16.5W 865 T5	15.5 mm	18.8 mm	1149 mm	1156.1 mm	1163.2 mm

## Photometric data



LEDtubes, TLED T12 120-277V 20W 6500K G13



LEDtube 1200mm 16-5W G5 865 2500lm

# MASTER LEDtube InstantFit HF T5

## Photometric data

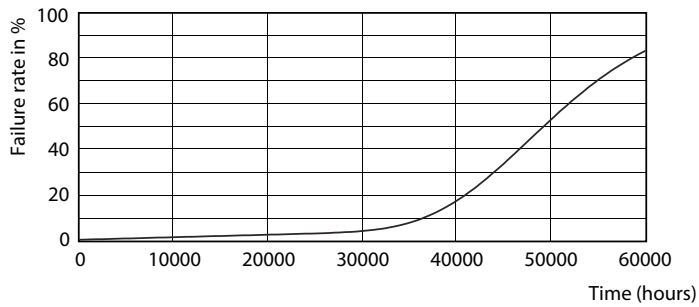


LEDtube 600mm 8W G5 830 1000lm

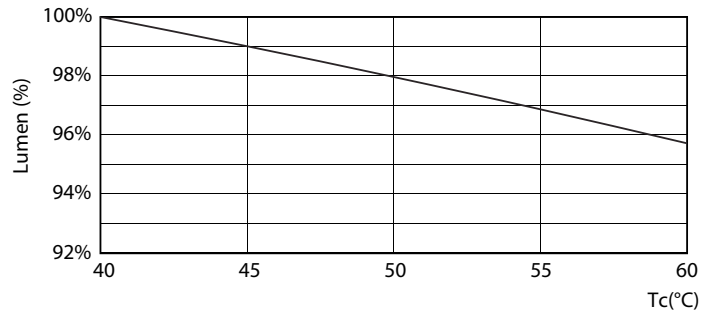
## Lifetime



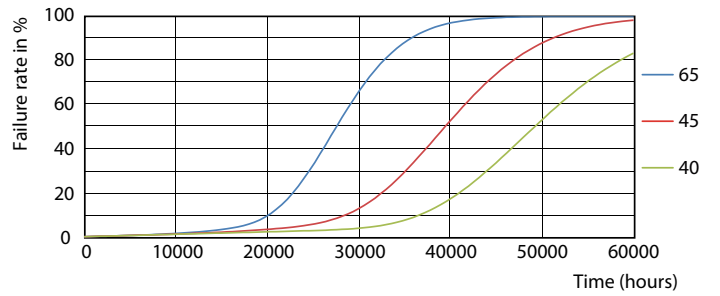
LEDtube 600mm 8W G5 830 1000lm



LEDtube 600mm 8W G5 830 1000lm



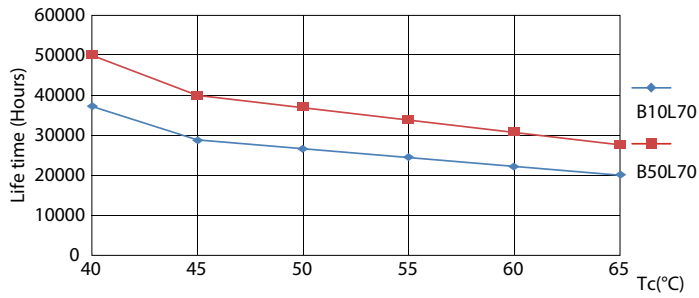
LEDtube 600mm 8W G5 830 1000lm



LEDtube 600mm 8W G5 830 1000lm

# MASTER LEDtube InstantFit HF T5

## Lifetime



LEDtube 600mm 8W G5 830 1000lm

