



# ZXP399 DMX Controls and Accessories

## ZXP399 DMX/RDM amplifier 24V 5P

12 to 24 DC V - - Hz - Dust penetration-protected, jet-proof - CE mark - Black

The ZXP399 DMX Controls and Wiring Accessories are to be used with our architectural and facade lighting luminaires (UniFlood C, M and G, UniStrip G4, UniEdge, UniDot G2, UniString and UniBar).;DMX Controls include a main controller, stand-alone controller, sub-controllers, DMX amplifier and DMX addressing device.;Main Controller: Industrial computer that can control up to 6,000 DMX universes.;Stand-alone Controller: Fits all medium applications with up to 700 DMX universes.;Wiring accessories include leader and jump cables with male and female IP67 connectors and end-caps.;Addressing Device: Hand-held device that can write DMX addresses to a whole run on-site within minutes.;DMX Amplifier: Compact, IP65 and low-power repeater that can amplify the DMX signal for up 100 metres.

### Product data

General Information	
CE mark	CE mark
Colour	Black
Operating and Electrical	
Input Voltage	12 to 24 DC V
Input frequency	- Hz

Mechanical and Housing	
Overall length	136.4 mm
Overall width	40 mm
Overall height	25.2 mm
Dimensions (height x width x depth)	25 x 40 x 136 mm (1 x 1.6 x 5.4 in)

## ZXP399 DMX Controls and Accessories

### Approval and Application

Ingress protection code IP65 [ Dust penetration-protected, jet-proof]

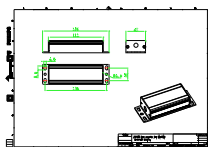
### Product Data

Full product code 911401756712  
Order product name ZXP399 DMX/RDM amplifier 24V 5P  
Order code 911401756712

SAP numerator – quantity per pack 1  
Numerator – packs per outer box 12  
SAP material 911401756712  
SAP net weight (piece) 0.157 kg

IP65

### Dimensional drawing



ZXP399

