



UniStrip G4

ZCP385 L52 glare shield (16 pcs)

Accessory - UniStrip G4

UniStrip G4 is a surface-mounted, exterior-rated LED luminaire that is designed for façade and outdoor architectural lighting applications.;One family that fits all your needs, wall washing, grazing and also linear flood lighting.;The robust mechanical and unique optical designs make it ideal for illuminating buildings facades, bridges, overpasses and any application that requires a linear lighting solution.;Available in white, monochromatic colours, RGB, RGBW and tunable white and DMX control option available with up to 8 pixels (8IDs) to give architects and designers the freedom to explore a wide range of concepts and design with no limitations.

Warnings and Safety

- For outdoor use only

Product data

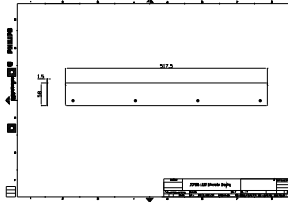
Mechanical and Housing	
Dimensions (height x width x depth)	NaN x NaN x NaN mm (NaN x NaN x NaN in)

Product Data	
Full product code	911401756582
Order product name	ZCP385 L52 glare shield (16 pcs)
Order code	911401756582

Numerator – quantity per pack	1
Numerator – packs per outer box	1
SAP material	911401756582
SAP net weight (piece)	1.899 kg

UniStrip G4

Dimensional drawing



Mechanical Accessory

