



UniStrip G4

ZCP383 L30 glare shield (30 pcs)

Accessory - UniStrip G4

UniStrip G4 is a surface-mounted, exterior-rated LED luminaire that is designed for façade and outdoor architectural lighting applications.;One family that fits all your needs, wall washing, grazing and also linear flood lighting.;The robust mechanical and unique optical designs make it ideal for illuminating buildings facades, bridges, overpasses and any application that requires a linear lighting solution.;Available in white, monochromatic colours, RGB, RGBW and tunable white and DMX control option available with up to 8 pixels (8IDs) to give architects and designers the freedom to explore a wide range of concepts and design with no limitations.

Warnings and Safety

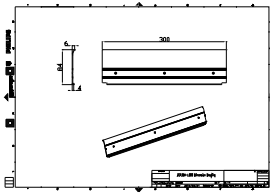
- For outdoor use only

Product data

Mechanical and Housing		SAP numerator – quantity per pack	
Dimensions (height x width x depth)	NaN x NaN x NaN mm (NaN x NaN x NaN in)	SAP numerator – packs per outer box	1
Product Data		SAP material	911401756522
Full product code	911401756522	Net Weight (Piece)	1.999 kg
Order product name	ZCP383 L30 glare shield (30 pcs)		
Order code	911401756522		

UniStrip G4

Dimensional drawing



Mechanical Accessory

