



UniStrip G4

BCP385 60LED 27K 220V A1 L100 DMX

UniStrip G4 is a surface-mounted, exterior-rated LED luminaire that is designed for façade and outdoor architectural lighting applications.;One family that fits all your needs, wall washing, grazing and also linear flood lighting.;The robust mechanical and unique optical designs make it ideal for illuminating buildings facades, bridges, overpasses and any application that requires a linear lighting solution.;Available in white, monochromatic colours, RGB, RGBW and tunable white and DMX control option available with up to 8 pixels (8IDs) to give architects and designers the freedom to explore a wide range of concepts and design with no limitations.

Warnings and Safety

- For outdoor use only

Product data

General Information		Light Technical	
Lamp colour code	Warm white	CE mark	CE mark
Light source replaceable	No	Optic type outdoor	Asymmetrical
Number of gear units	1 unit	Number of products on MCB (16 A type B)	3
Driver/power unit/transformer	PSU [Power supply unit]	LED engine type	LED
Driver included	Yes	Serviceability class	Class B, the luminaire is equipped with some serviceable parts (when applicable): driver, control units, surge-protection device, front cover and mechanical parts
Optical cover/lens type	GT [Tempered glass]		
Luminaire light beam spread	7.5° x 27°		
Control interface	Dynamix DMX		
Connection	Flying leads/wires and 2 push-in connectors 4-pole	Standard tilt angle post-top	-
Cable	Cable 0.3 m without plug 3-pole + 2 cables 0.3 m with connector 4-pole	Standard tilt angle side entry	-
Protection class IEC	Safety class I (I)		
Flammability mark	F [For mounting on normally flammable surfaces]	Operating and Electrical	
		Input Voltage	220 to 240 V
		Input frequency	50 to 60 Hz

UniStrip G4

Inrush current	70 A
Inrush time	0.65 ms
Power factor (min.)	0.9

Controls and Dimming

Dimmable	Yes
----------	-----

Mechanical and Housing

Housing material	Aluminum extruded
Optic material	Polymethyl methacrylate
Optical cover/lens material	Glass
Fixation material	Aluminium
Mounting device	MBA [Mounting bracket adjustable]
Optical cover/lens shape	Flat
Optical cover/lens finish	Clear
Overall length	1000 mm
Overall width	88 mm
Overall height	158 mm
Colour	Dark Grey

Approval and Application

Ingress protection code	IP66 [Dust penetration-protected, jet-proof]
Mech. impact protection code	IK06 [1 J]

Initial Performance (IEC Compliant)

Initial luminous flux (system flux)	6610 lm
-------------------------------------	---------

Luminous flux tolerance	+/-10%
Initial LED luminaire efficacy	55 lm/W
Lamp colour temperature	2700 K
Colour Rendering Index	80
Initial chromaticity	4 SDCM
Initial input power	120 W
Power consumption tolerance	+/-10%

Application Conditions

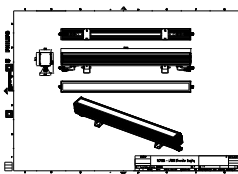
Ambient temperature range	-40 to +50 °C
Maximum dimming level	10%

Product Data

Full product code	911401752082
Order product name	BCP385 60LED 27K 220V A1 L100 DMX
Order code	911401752082
Numerator – quantity per pack	1
SAP numerator – packs per outer box	2
Material no. (12 NC)	911401752082
Net Weight (Piece)	3.949 kg



Dimensional drawing



BCP280/383/384/385 UNiStrip G3

UniStrip G4

