

UniStrip G4

BCP384 9LED 40K 220V A2 L30

UniStrip G4 is a surface-mounted, exterior-rated LED luminaire that is designed for façade and outdoor architectural lighting applications.;One family that fits all your needs, wall washing, grazing and also linear flood lighting.;The robust mechanical and unique optical designs make it ideal for illuminating buildings facades, bridges, overpasses and any application that requires a linear lighting solution.;Available in white, monochromatic colours, RGB, RGBW and tunable white and DMX control option available with up to 8 pixels (8IDs) to give architects and designers the freedom to explore a wide range of concepts and design with no limitations.

Warnings and Safety

- For outdoor use only

Product data

General Information		Number of products on MCB (16 A type B) 6	
Lamp colour code	Neutral white	Light source engine type	LED
Light source replaceable	No	Serviceability class	Class B, the luminaire is equipped with some serviceable parts (when applicable): driver, control units, surge-protection device, front cover and mechanical parts
Number of gear units	1 unit		
Driver/power unit/transformer	PSU [Power supply unit]		
Driver included	Yes		
Optical cover/lens type	GT [Tempered glass]		
Luminaire light beam spread	16° x 35°		
Control interface	-		
Connection	Flying leads/wires		
Cable	Cable 0.3 m without plug 3-pole		
Protection class IEC	Safety class I (I)		
Flammability mark	F [For mounting on normally flammable surfaces]		
CE mark	CE mark		
Optic type outdoor	Asymmetrical		
		Light Technical	
		Standard tilt angle post-top	-
		Standard tilt angle side entry	-
		Operating and Electrical	
		Input Voltage	220 to 240 V
		Input frequency	50 to 60 Hz
		Inrush current	40 A
		Inrush time	0.45 ms

UniStrip G4

Power factor (min.)	0.9
---------------------	-----

Controls and Dimming

Dimmable	No
----------	----

Mechanical and Housing

Housing material	Aluminum extruded
Optic material	Polymethyl methacrylate
Optical cover/lens material	Glass
Fixation material	Aluminium
Mounting device	MBA [Mounting bracket adjustable]
Optical cover/lens shape	Flat
Optical cover/lens finish	Clear
Overall length	300 mm
Overall width	80 mm
Overall height	105 mm
Colour	Dark Grey

Approval and Application

Ingress protection code	IP66 [Dust penetration-protected, jet-proof]
Mech. impact protection code	IK06 [1 J]

Initial Performance (IEC Compliant)

Initial luminous flux	1244 lm
-----------------------	---------

Luminous flux tolerance	+/-10%
Initial LED luminaire efficacy	62 lm/W
Lamp colour temperature	4000 K
Colour Rendering Index	80
Initial chromaticity	4 SDCM
Initial input power	20 W
Power consumption tolerance	+/-10%

Application Conditions

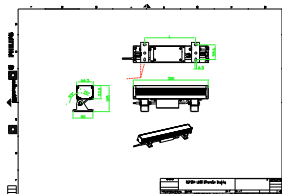
Ambient temperature range	-40 to +50 °C
---------------------------	---------------

Product Data

Full product code	911401751582
Order product name	BCP384 9LED 40K 220V A2 L30
Order code	911401751582
Numerator – quantity per pack	1
Numerator – packs per outer box	8
SAP material	911401751582
SAP net weight (piece)	1.699 kg



Dimensional drawing



BCP280/383/384/385 UNiStrip G3

