

UniStrip G4

BCP384 36LED 30K 220V 40 L100

UniStrip G4 is a surface-mounted, exterior-rated LED luminaire that is designed for façade and outdoor architectural lighting applications.;One family that fits all your needs, wall washing, grazing and also linear flood lighting.;The robust mechanical and unique optical designs make it ideal for illuminating buildings facades, bridges, overpasses and any application that requires a linear lighting solution.;Available in white, monochromatic colours, RGB, RGBW and tunable white and DMX control option available with up to 8 pixels (8IDs) to give architects and designers the freedom to explore a wide range of concepts and design with no limitations.

Warnings and Safety

- For outdoor use only

Product data

General Information	
Lamp colour code	Warm white
Light source replaceable	No
Number of gear units	1 unit
Driver/power unit/transformer	PSU [Power supply unit]
Driver included	Yes
Optical cover/lens type	GT [Tempered glass]
Luminaire light beam spread	40° x 40°
Control interface	-
Connection	Flying leads/wires
Cable	Cable 0.3 m without plug 3-pole
Protection class IEC	Safety class I (I)
Flammability mark	F [For mounting on normally flammable surfaces]
CE mark	CE mark
Optic type outdoor	Medium beam angle 40°

Number of products on MCB (16 A type B)	4
LED engine type	LED
Serviceability class	Class B, the luminaire is equipped with some serviceable parts (when applicable): driver, control units, surge-protection device, front cover and mechanical parts

Light Technical

Standard tilt angle post-top	-
Standard tilt angle side entry	-

Operating and Electrical

Input Voltage	220 to 240 V
Input frequency	50 to 60 Hz
Inrush current	60 A
Inrush time	0.85 ms

UniStrip G4

Power factor (min.)	0.9
Controls and Dimming	
Dimmable	No
Mechanical and Housing	
Housing material	Aluminum extruded
Optic material	Polymethyl methacrylate
Optical cover/lens material	Glass
Fixation material	Aluminium
Mounting device	MBA [Mounting bracket adjustable]
Optical cover/lens shape	Flat
Optical cover/lens finish	Clear
Overall length	1000 mm
Overall width	80 mm
Overall height	105 mm
Colour	Dark Grey
Approval and Application	
Ingress protection code	IP66 [Dust penetration-protected, jet-proof]
Mech. impact protection code	IK06 [1 J]
Initial Performance (IEC Compliant)	
Initial luminous flux (system flux)	4410 lm

Luminous flux tolerance	+/-10%
Initial LED luminaire efficacy	55 lm/W
Lamp colour temperature	3000 K
Colour Rendering Index	80
Initial chromaticity	4 SDCM
Initial input power	80 W
Power consumption tolerance	+/-10%

Application Conditions

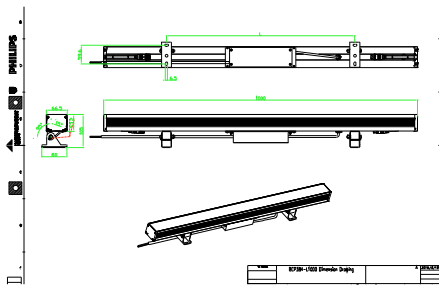
Ambient temperature range	-40 to +50 °C
---------------------------	---------------

Product Data

Full product code	911401751402
Order product name	BCP384 36LED 30K 220V 40 L100
Order code	911401751402
Numerator – quantity per pack	1
SAP numerator – packs per outer box	4
Material no. (12 NC)	911401751402
Net Weight (Piece)	4.199 kg



Dimensional drawing



BCP280/383/384/385 UNiStrip G3

