

# UniStrip G4

## BCP383 6LED RGBNW 220V A4 L30 DMX

UniStrip G4 is a surface-mounted, exterior-rated LED luminaire that is designed for façade and outdoor architectural lighting applications.;One family that fits all your needs, wall washing, grazing and also linear flood lighting.;The robust mechanical and unique optical designs make it ideal for illuminating buildings facades, bridges, overpasses and any application that requires a linear lighting solution.;Available in white, monochromatic colours, RGB, RGBW and tunable white and DMX control option available with up to 8 pixels (8IDs) to give architects and designers the freedom to explore a wide range of concepts and design with no limitations.

### Warnings and Safety

- For outdoor use only

### Product data

| General Information           |   | Light Technical                         |  |
|-------------------------------|---|---|--|
| Lamp colour code              | Red, green, blue and white  | CE mark                                 | CE mark  |
| Light source replaceable      | No  | Optic type outdoor                      | Asymmetrical   |
| Number of gear units          | 1 unit  | Number of products on MCB (16 A type B) | 6  |
| Driver/power unit/transformer | PSU [ Power supply unit]  | Light source engine type                | LED  |
| Driver included               | Yes   | Serviceability class                    | Class B, the luminaire is equipped with some serviceable parts (when applicable): driver, control units, surge-protection device, front cover and mechanical parts |
| Optical cover/lens type       | CLFT [ Clear flat]  |   |  |
| Luminaire light beam spread   | 25° x 40°   |   |  |
| Control interface             | Dynamic DMX   |   |  |
| Connection                    | Flying leads/wires and 2 push-in connectors<br>4-pole                     |   |  |
| Cable                         | Cable 0.3 m without plug 3-pole + 2 cables<br>0.3 m with connector 4-pole |   |  |
| Protection class IEC          | Safety class I (I)  |   |  |
| Flammability mark             | F [ For mounting on normally flammable surfaces]                          |   |  |
|                               |   | Operating and Electrical                |  |
|                               |   | Input Voltage                           | 220 to 240 V   |
|                               |   | Input frequency                         | 50 to 60 Hz  |

## UniStrip G4

|                     |         |
|---------------------|---------|
| Inrush current      | 60 A    |
| Inrush time         | 0.45 ms |
| Power factor (min.) | 0.9     |

### Controls and Dimming

|          |     |
|----------|-----|
| Dimmable | Yes |
|----------|-----|

### Mechanical and Housing

|                             |                                    |
|-----------------------------|------------------------------------|
| Housing material            | Aluminum extruded                  |
| Optic material              | Polymethyl methacrylate            |
| Optical cover/lens material | Tempered glass                     |
| Fixation material           | Aluminium                          |
| Mounting device             | MBA [ Mounting bracket adjustable] |
| Optical cover/lens shape    | Flat                               |
| Optical cover/lens finish   | Clear                              |
| Overall length              | 300 mm                             |
| Overall width               | 45 mm                              |
| Overall height              | 105 mm                             |
| Colour                      | Dark Grey                          |

### Approval and Application

|                              |   |
|------------------------------|---|
| Ingress protection code      | IP66 [ Dust penetration-protected, jet-proof] |
| Mech. impact protection code | IK06 [ 1 J]                                   |

### Initial Performance (IEC Compliant)

|                                |         |
|--------------------------------|---------|
| Initial luminous flux          | 426 lm  |
| Luminous flux tolerance        | +/-10%  |
| Initial LED luminaire efficacy | 28 lm/W |
| Lamp colour temperature        | - K     |
| Colour Rendering Index         | -       |
| Initial input power            | 15 W    |
| Power consumption tolerance    | +/-10%  |

### Application Conditions

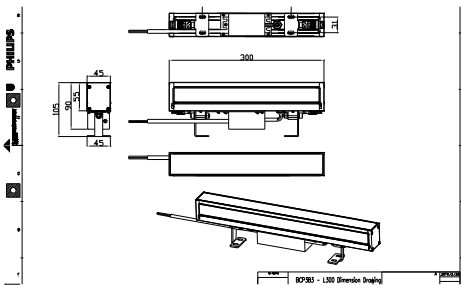
|                           |               |
|---------------------------|---------------|
| Ambient temperature range | -40 to +50 °C |
| Maximum dimming level     | 10%           |

### Product Data

|                                   |                                   |
|-----------------------------------|-----------------------------------|
| Full product code                 | 911401751142                      |
| Order product name                | BCP383 6LED RGBNW 220V A4 L30 DMX |
| Order code                        | 911401751142                      |
| SAP numerator – quantity per pack | 1                                 |
| Numerator – packs per outer box   | 12                                |
| SAP material                      | 911401751142                      |
| SAP net weight (piece)            | 1.399 kg                          |



## Dimensional drawing



BCP280/383/384/385 UNiStrip G3

