

UniStrip G4

ZCP382 L100 glare shield (10 pcs)

Accessory - UniStrip G4

UniStrip G4 is a surface-mounted, exterior-rated LED luminaire that is designed for façade and outdoor architectural lighting applications.;One family that fits all your needs, wall washing, grazing and also linear flood lighting.;The robust mechanical and unique optical designs make it ideal for illuminating buildings facades, bridges, overpasses and any application that requires a linear lighting solution.;Available in white, monochromatic colours, RGB, RGBW and tunable white and DMX control option available with up to 8 pixels (8IDs) to give architects and designers the freedom to explore a wide range of concepts and design with no limitations.

Warnings and Safety

- For outdoor use only

Product data

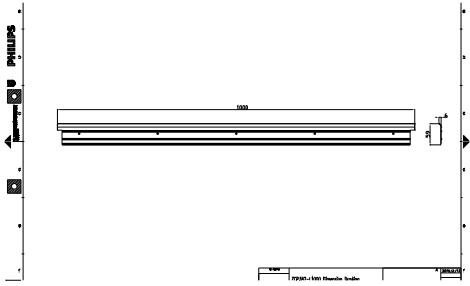
General Information	
Material	Steel
Colour	Dark Grey

Mechanical and Housing	
Overall length	1000 mm
Overall width	6.1 mm
Overall height	59 mm
Dimensions (height x width x depth)	59 x 6 x 1000 mm (2.3 x 0.2 x 39.4 in)

Product Data	
Full product code	911401742322
Order product name	ZCP382 L100 glare shield (10 pcs)
Order code	911401742322
Numerator – quantity per pack	1
SAP numerator – packs per outer box	1
Material no. (12 NC)	911401742322
Net Weight (Piece)	1.740 kg

UniStrip G4

Dimensional drawing



UNIUrban ZSP461/ZCP461

