

UniStrip G4

BCP381 12LED 27K 24V 40 L50

UniStrip G4 is a surface-mounted, exterior-rated LED luminaire that is designed for façade and outdoor architectural lighting applications.;One family that fits all your needs, wall washing, grazing and also linear flood lighting.;The robust mechanical and unique optical designs make it ideal for illuminating buildings facades, bridges, overpasses and any application that requires a linear lighting solution.;Available in white, monochromatic colours, RGB, RGBW and tunable white and DMX control option available with up to 8 pixels (8IDs) to give architects and designers the freedom to explore a wide range of concepts and design with no limitations.

Warnings and Safety

- For outdoor use only

Product data

General Information		control units, surge-protection device, front cover and mechanical parts	
Lamp colour code	Warm white		
Light source replaceable	No		
Driver included	No		
Optical cover/lens type	CLFT [Clear flat]		
Luminaire light beam spread	40° x 40°		
Control interface	-		
Connection	2 push-in connectors 2-pole		
Cable	2 cables 0.15 m with connectors 2-pole		
Protection class IEC	Safety class III (III)		
Flammability mark	F [For mounting on normally flammable surfaces]		
CE mark	CE mark		
LED engine type	LED		
Serviceability class	Class B, the luminaire is equipped with some serviceable parts (when applicable): driver,		
		Operating and Electrical	
		Input Voltage	24 DC V
		Input frequency	- Hz
		Power factor (min.)	0.9
		Controls and Dimming	
		Dimmable	No
		Mechanical and Housing	
		Housing material	Aluminum extruded
		Optic material	Polymethyl methacrylate
		Optical cover/lens material	Tempered glass
		Fixation material	Aluminium

UniStrip G4

Mounting device	MBA [Mounting bracket adjustable]
Optical cover/lens finish	Clear
Overall length	500 mm
Overall width	38 mm
Overall height	47 mm
Colour	Dark Grey

Approval and Application

Ingress protection code	IP66 [Dust penetration-protected, jet-proof]
Mech. impact protection code	IK06 [1 J]

Initial Performance (IEC Compliant)

Initial luminous flux (system flux)	842 lm
Luminous flux tolerance	+/-10%
Initial LED luminaire efficacy	70 lm/W
Lamp colour temperature	2700 K
Colour Rendering Index	80
Initial chromaticity	4 SDCM

Initial input power	12 W
Power consumption tolerance	+/-10%

Application Conditions

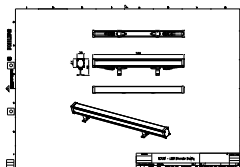
Ambient temperature range	-40 to +50 °C
---------------------------	---------------

Product Data

Full product code	911401738622
Order product name	BCP381 12LED 27K 24V 40 L50
Order code	911401738622
SAP numerator – quantity per pack	1
SAP numerator – packs per outer box	15
SAP material	911401738622
Net Weight (Piece)	0.829 kg



Dimensional drawing



BCP280/383/384/385 UNIStrip G3

