

UniStrip G4

BCP380 48LEDLP 30K 24V 40 L100 DMX

UniStrip G4 is a surface-mounted, exterior-rated LED luminaire that is designed for façade and outdoor architectural lighting applications.;One family that fits all your needs, wall washing, grazing and also linear flood lighting.;The robust mechanical and unique optical designs make it ideal for illuminating buildings facades, bridges, overpasses and any application that requires a linear lighting solution.;Available in white, monochromatic colours, RGB, RGBW and tunable white and DMX control option available with up to 8 pixels (8IDs) to give architects and designers the freedom to explore a wide range of concepts and design with no limitations.

Warnings and Safety

- For outdoor use only

Product data

General Information		Operating and Electrical	
Lamp colour code	Warm white	Input Voltage	24 DC V
Light source replaceable	No	Input frequency	- Hz
Driver included	No	Power factor (min.)	0.9
Optical cover/lens type	CLFT [Clear flat]	Controls and Dimming	
Luminaire light beam spread	40° x 40°	Dimmable	Yes
Control interface	Dynamix DMX	Mechanical and Housing	
Connection	2 push-in connectors 5-pole	Housing material	Aluminum extruded
Cable	2 cables 0.15 m with connectors 5-pole	Optic material	Polycarbonate
Protection class IEC	Safety class III (III)	Optical cover/lens material	Tempered glass
Flammability mark	F [For mounting on normally flammable surfaces]	Fixation material	Stainless steel
CE mark	CE mark	control units, surge-protection device, front cover and mechanical parts	
LED engine type	LED		
Serviceability class	Class B, the luminaire is equipped with some serviceable parts (when applicable): driver,		

UniStrip G4

Mounting device	MBA [Mounting bracket adjustable]
Optical cover/lens finish	Clear
Overall length	1000 mm
Overall width	35 mm
Overall height	86 mm
Colour	Dark Grey

Approval and Application

Ingress protection code	IP66 [Dust penetration-protected, jet-proof]
Mech. impact protection code	IK06 [1 J]

Initial Performance (IEC Compliant)

Initial luminous flux (system flux)	571 lm
Luminous flux tolerance	+/-10%
Initial LED luminaire efficacy	50 lm/W
Lamp colour temperature	3000 K
Colour Rendering Index	80
Initial chromaticity	4 SDCM

Initial input power	11.5 W
Power consumption tolerance	+/-10%

Application Conditions

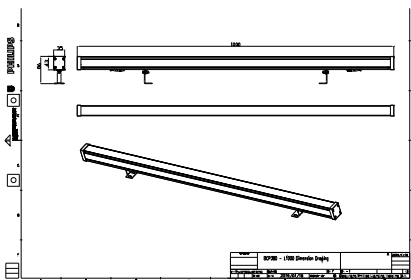
Ambient temperature range	-40 to +50 °C
---------------------------	---------------

Product Data

Full product code	911401738512
Order product name	BCP380 48LEDLP 30K 24V 40 L100 DMX
Order code	911401738512
Numerator – quantity per pack	1
SAP numerator – packs per outer box	15
Material no. (12 NC)	911401738512
Net Weight (Piece)	1.199 kg



Dimensional drawing



BCP280/383/384/385 UNiStrip G3

