

UniStrip G4

BCP380 12LEDLP 40K 24V 40 L30 DMX

UniStrip G4 is a surface-mounted, exterior-rated LED luminaire that is designed for façade and outdoor architectural lighting applications.;One family that fits all your needs, wall washing, grazing and also linear flood lighting.;The robust mechanical and unique optical designs make it ideal for illuminating buildings facades, bridges, overpasses and any application that requires a linear lighting solution.;Available in white, monochromatic colours, RGB, RGBW and tunable white and DMX control option available with up to 8 pixels (8IDs) to give architects and designers the freedom to explore a wide range of concepts and design with no limitations.

Warnings and Safety

- For outdoor use only

Product data

General Information		
Lamp colour code	Neutral white	units, surge-protection device, front cover and mechanical parts
Light source replaceable	No	
Driver included	No	
Optical cover/lens type	CLFT [Clear flat]	
Luminaire light beam spread	40° x 40°	
Control interface	Dynamix DMX	
Connection	2 push-in connectors 5-pole	
Cable	2 cables 0.15 m with connectors 5-pole	
Protection class IEC	Safety class III (III)	
Flammability mark	F [For mounting on normally flammable surfaces]	
CE mark	CE mark	
Light source engine type	LED	
Serviceability class	Class B, the luminaire is equipped with some serviceable parts (when applicable): driver, control	
Operating and Electrical		
Input Voltage	24 DC V	
Input frequency	- Hz	
Power factor (min.)	0.9	
Controls and Dimming		
Dimmable	Yes	
Mechanical and Housing		
Housing material	Aluminum extruded	
Optic material	Polycarbonate	
Optical cover/lens material	Tempered glass	
Fixation material	Stainless steel	

UniStrip G4

Mounting device	MBA [Mounting bracket adjustable]
Optical cover/lens finish	Clear
Overall length	300 mm
Overall width	35 mm
Overall height	86 mm
Colour	Dark Grey

Approval and Application

Ingress protection code	IP66 [Dust penetration-protected, jet-proof]
Mech. impact protection code	IK06 [1 J]

Initial Performance (IEC Compliant)

Initial luminous flux	157 lm
Luminous flux tolerance	+/-10%
Initial LED luminaire efficacy	52 lm/W
Lamp colour temperature	4000 K
Colour Rendering Index	80
Initial chromaticity	4 SDCM

Initial input power	3 W
Power consumption tolerance	+/-10%

Application Conditions

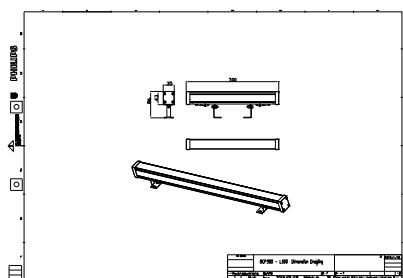
Ambient temperature range	-40 to +50 °C
---------------------------	---------------

Product Data

Full product code	911401738232
Order product name	BCP380 12LEDLP 40K 24V 40 L30 DMX
Order code	911401738232
Numerator – quantity per pack	1
Numerator – packs per outer box	15
SAP material	911401738232
SAP net weight (piece)	0.699 kg



Dimensional drawing



BCP280/383/384/385 UNiStrip G3

