

UniStrip G4

BCP380 12LEDLP 30K 24V A4 L30

UniStrip G4 is a surface-mounted, exterior-rated LED luminaire that is designed for façade and outdoor architectural lighting applications.;One family that fits all your needs, wall washing, grazing and also linear flood lighting.;The robust mechanical and unique optical designs make it ideal for illuminating buildings facades, bridges, overpasses and any application that requires a linear lighting solution.;Available in white, monochromatic colours, RGB, RGBW and tunable white and DMX control option available with up to 8 pixels (8IDs) to give architects and designers the freedom to explore a wide range of concepts and design with no limitations.

Warnings and Safety

- For outdoor use only

Product data

| General Information | | | |
|-----------------------------|---|--|-------------------|
| Lamp colour code | Warm white | control units, surge-protection device, front cover and mechanical parts | |
| Light source replaceable | No | | |
| Driver included | No | | |
| Optical cover/lens type | CLFT [Clear flat] | | |
| Luminaire light beam spread | 25° x 40° | | |
| Control interface | - | | |
| Connection | 2 push-in connectors 2-pole | | |
| Cable | 2 cables 0.15 m with connectors 2-pole | | |
| Protection class IEC | Safety class III (III) | | |
| Flammability mark | F [For mounting on normally flammable surfaces] | | |
| CE mark | CE mark | | |
| LED engine type | LED | | |
| Serviceability class | Class B, the luminaire is equipped with some serviceable parts (when applicable): driver, | | |
| | | | |
| | | Operating and Electrical | |
| | | Input Voltage | 24 DC V |
| | | Input frequency | - Hz |
| | | Power factor (min.) | 0.9 |
| | | | |
| | | Controls and Dimming | |
| | | Dimmable | No |
| | | | |
| | | Mechanical and Housing | |
| | | Housing material | Aluminum extruded |
| | | Optic material | Polycarbonate |
| | | Optical cover/lens material | Tempered glass |
| | | Fixation material | Stainless steel |

UniStrip G4

| | |
|---------------------------|------------------------------------|
| Mounting device | MBA [Mounting bracket adjustable] |
| Optical cover/lens finish | Clear |
| Overall length | 300 mm |
| Overall width | 35 mm |
| Overall height | 86 mm |
| Colour | Dark Grey |

Approval and Application

| | |
|------------------------------|---|
| Ingress protection code | IP66 [Dust penetration-protected, jet-proof] |
| Mech. impact protection code | IK06 [1 J] |

Initial Performance (IEC Compliant)

| | |
|-------------------------------------|---------|
| Initial luminous flux (system flux) | 188 lm |
| Luminous flux tolerance | +/-10% |
| Initial LED luminaire efficacy | 63 lm/W |
| Lamp colour temperature | 3000 K |
| Colour Rendering Index | 80 |
| Initial chromaticity | 4 SDCM |

| | |
|-----------------------------|--------|
| Initial input power | 3 W |
| Power consumption tolerance | +/-10% |

Application Conditions

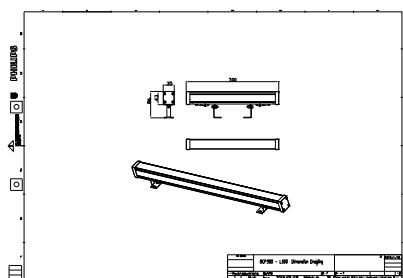
| | |
|---------------------------|---------------|
| Ambient temperature range | -40 to +50 °C |
|---------------------------|---------------|

Product Data

| | |
|-------------------------------------|-------------------------------|
| Full product code | 911401738162 |
| Order product name | BCP380 12LEDLP 30K 24V A4 L30 |
| Order code | 911401738162 |
| Numerator – quantity per pack | 1 |
| SAP numerator – packs per outer box | 15 |
| Material no. (12 NC) | 911401738162 |
| Net Weight (Piece) | 0.699 kg |



Dimensional drawing



BCP280/383/384/385 UNiStrip G3

