



# The new generation of energy-saving tube lighting

## Other LEDtube

Philips LEDtube integrates a LED light source into a traditional fluorescent form factor. This product is the ideal solution for uplampping in general lighting applications: it meets basic lighting requirements, offers significant energy savings, and is environmentally friendly.

### Benefits

- Reduced operational cost thanks to lower energy consumption
- Lower maintenance cost thanks to 2-3 times longer lifetime than conventional lamps
- Fastest and easiest way to upgrade existing luminaires to LED technology; completely safe product and installation process

### Features

- Highly energy-efficient
- Easy installation
- Conventional form factor to fit into existing luminaires
- No mercury

### Application

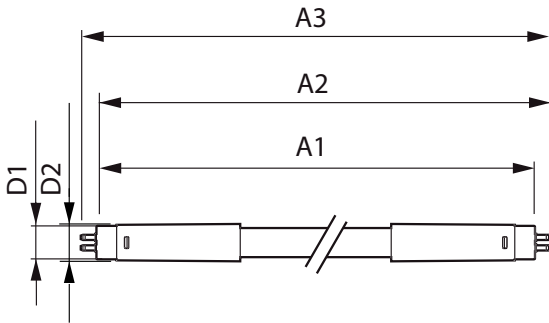
- Hospitality, retail, office, industrial and home applications

## Other LEDtube

### Versions



### Dimensional drawing



Product	D1	D2	A1	A2	A3
MAS Ledtube 600mm HO 8.3W 840 T5 DC	15.8 mm	19 mm	549 mm	556.1 mm	563.2 mm
MAS Ledtube 1200mm HO 16W 840 T5 DC	15.8 mm	19 mm	1149 mm	1156.1 mm	1163.2 mm
MAS Ledtube 600mm HO 8.3W 865 T5 DC	15.8 mm	19 mm	549 mm	556.1 mm	563.2 mm
MAS Ledtube 1200mm HO 16W 865 T5 DC	15.8 mm	19 mm	1149 mm	1156.1 mm	1163.2 mm

## Other LEDtube

### Controls and Dimming

Dimmable	Yes
----------	-----

### Operating and Electrical

Input Frequency	- Hz
Voltage (Nom)	52-59 V
Starting Time (Nom)	0.5 s

### General Information

Cap-Base	G5
Nominal Lifetime (Nom)	50000 h
Switching Cycle	200,000X

### Light Technical

Beam Angle (Nom)	160 °
Colour Rendering Index (Nom)	82
Llmf At End Of Nominal Lifetime (Nom)	70 %

### Mechanical and Housing

Bulb Finish	Frosted
Bulb Shape	Tube, double-ended

### Temperature

T-Ambient (Max)	45 °C
T-Ambient (Min)	-20 °C
T-Storage (Max)	65 °C
T-Storage (Min)	-40 °C

### Approval and Application

Order Code	Full Product Name	Energy Consumption kWh/1000 h
929002387208	MAS Ledtube 600mm HO 8.3W 840 T5 DC	9 kWh
929002387308	MAS Ledtube 600mm HO 8.3W 865 T5 DC	9 kWh
929002387408	MAS Ledtube 1200mm HO 16W 840 T5 DC	16 kWh
929002387508	MAS Ledtube 1200mm HO 16W 865 T5 DC	16 kWh

### Operating and Electrical

Order Code	Full Product Name	Power (Nom)
929002387208	MAS Ledtube 600mm HO 8.3W 840 T5 DC	8.3 W
929002387308	MAS Ledtube 600mm HO 8.3W 865 T5 DC	8.3 W

Order Code	Full Product Name	Power (Nom)
929002387408	MAS Ledtube 1200mm HO 16W 840 T5 DC	16 W
929002387508	MAS Ledtube 1200mm HO 16W 865 T5 DC	16 W

### Light Technical

Order Code	Full Product Name	Colour Code	Correlated Colour	
			Temperature (Nom)	Luminous Flux (Nom)
929002387208	MAS Ledtube 600mm HO 8.3W 840 T5 DC	840	4000 K	1250 lm
929002387308	MAS Ledtube 600mm HO 8.3W 865 T5 DC	865	6500 K	1250 lm

Order Code	Full Product Name	Colour Code	Correlated Colour	
			Temperature (Nom)	Luminous Flux (Nom)
929002387408	MAS Ledtube 1200mm HO 16W 840 T5 DC	840	4000 K	2500 lm
929002387508	MAS Ledtube 1200mm HO 16W 865 T5 DC	865	6500 K	2500 lm

### Temperature

Order Code	Full Product Name	T-Case Maximum (Nom)
929002387208	MAS Ledtube 600mm HO 8.3W 840 T5 DC	45 °C
929002387308	MAS Ledtube 600mm HO 8.3W 865 T5 DC	45 °C
929002387408	MAS Ledtube 1200mm HO 16W 840 T5 DC	55 °C

Order Code	Full Product Name	T-Case Maximum (Nom)
929002387508	MAS Ledtube 1200mm HO 16W 865 T5 DC	55 °C

## Other LEDtube

