



# MASTER LEDtube InstantFit HF T5

## Master LEDtube HF 1500mm UO 36W 840 T5

Philips MASTER LEDtube InstantFit T5 integrates a LED light source into a traditional fluorescent form factor. Its unique design creates a perfectly uniform visual appearance which cannot be distinguished from traditional fluorescents. The Philips MASTER LEDtube InstantFit T5 is the ideal solution for customers who have higher light output requirements and want to maximise value over the lifetime. The full energy savings & longer lifetime result in attractive payback times and TCO benefits.

### Product data

General Information		Power (Rated) (Nom)	
Cap base	G5 [ G5]		36 W
EU RoHS compliant	Yes	Lamp current (max.)	750 mA
Nominal lifetime (nom.)	60000 h	Lamp current (min.)	550 mA
Switching cycle	50,000X	Starting time (nom.)	0.5 s
		Warm-up time to 60% light (nom.)	0.5 s
		Power factor (nom.)	0.9
		Voltage (Nom)	65-75 V
Light Technical		Temperature	
Colour Code	840 [ CCT of 4,000 K]	T-ambient (max.)	45 °C
Beam Angle (Nom)	160 °	T-ambient (min.)	-20 °C
Lamp Luminous Flux 25°C EL (Nom)	5600 lm	T storage (max.)	65 °C
Colour Designation	Cool White (CW)	T storage (min.)	-40 °C
Colour Temperature, horizontal (Nom)	4000 K	T-Case maximum (nom.)	75 °C
Lamp Luminous Efficacy EM (Nom)	155.00 lm/W		
Colour consistency	<6	Controls and Dimming	
Colour Rendering Index,horiz (Nom)	80	Dimmable	No
LLMF at end of nominal lifetime (nom.)	70 %		
Operating and Electrical			
Input frequency	40000-75000 Hz		

# MASTER LEDtube InstantFit HF T5

## Mechanical and Housing

Lamp Finish	Frosted
Bulb material	Plastic
Product length	1500 mm

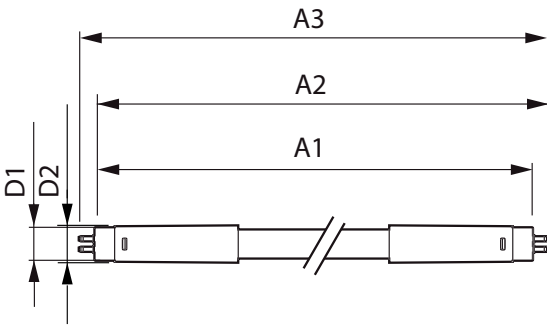
## Approval and Application

Energy efficiency label (EEL)	A++
Energy-saving product	Yes
Approval marks	RoHS compliance CE marking KEMA Keur certificate
Energy consumption kWh/1,000 hours	42 kWh

## Product Data

Full product code	871869670603900
Order product name	Master LEDtube HF 1500mm UO 36W 840 T5
EAN/UPC – product	8718696706039
Order code	929001346202
SAP numerator – quantity per pack	1
Numerator – packs per outer box	10
SAP material	929001346202
SAP net weight (piece)	0.170 kg

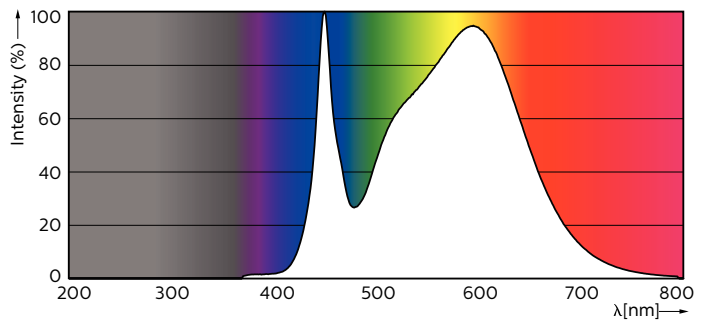
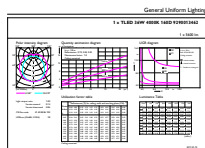
## Dimensional drawing



TLED 230V 37-80W 5600lm 160D 4000K G5 ND

Product	D1	D2	A1	A2	A3
Master LEDtube HF 1500mm UO 36W 840 T5	15.2 mm	21 mm	1447.8 mm	1454.9 mm	1462 mm

## Photometric data

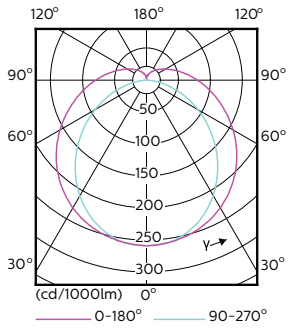


LEDtube 1500mm 36W G5 840 5600lm

LEDtube 1500mm 36W G5 840 5600lm

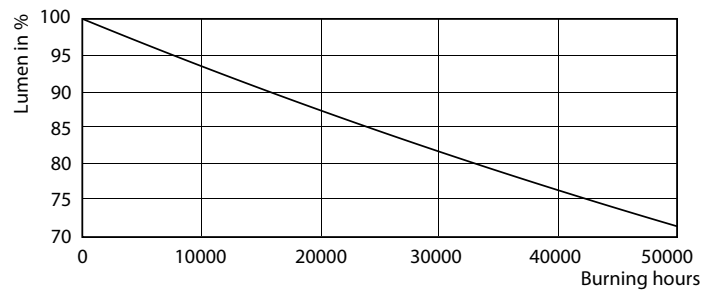
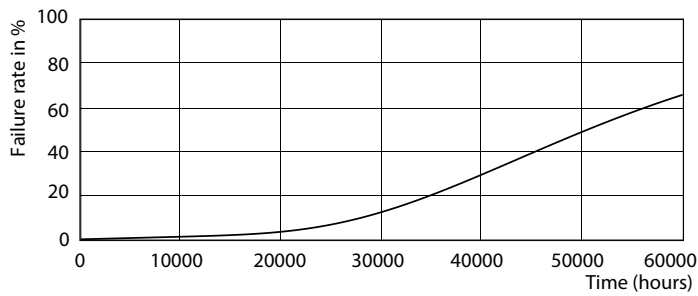
# MASTER LEDtube InstantFit HF T5

## Photometric data



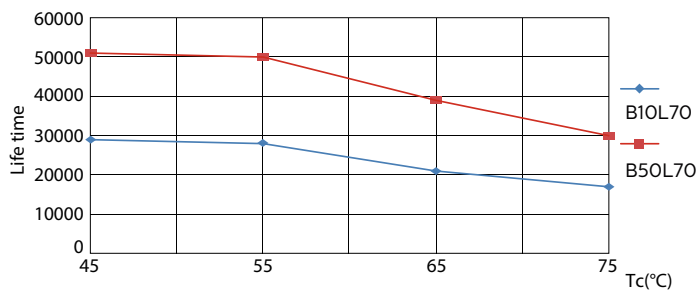
LEDtube 1200mm 26W G5

## Lifetime



LEDtube 1500mm 36W G5 5600lm

LEDtube 1500mm 36W G5 5600lm

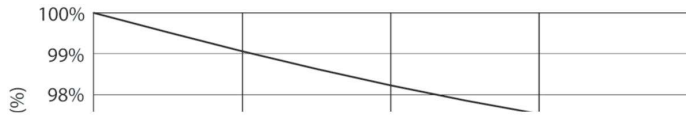


LEDtube 1500mm 36W G5 5600lm

LEDtube 1200mm 26W G5 3900lm

# MASTER LEDtube InstantFit HF T5

## Lifetime



LEDtube 1500mm 36W G5 5600lm

