



UniString

BWS302 8LED 30K 24V S N10P20

UniString - 142 lm - 2 W - 3000 K

UniString is a surface-mounted, exterior-rated and compact-sized architectural LED direct view string that is designed for architectural and media façade outdoor lighting applications.;The robust mechanical design, easy installation and unique optical lenses make UniString ideal for buildings/media facades, bridges, arenas, theatres, amusement parks and recreational centres.;Available in white, monochromatic colours, RGB, RGBW and tunable white.;Available in symmetrical and asymmetrical optical distributions with DMX control option to give architects and designers the freedom to explore a wide range of concepts and design with no limitations.

Warnings and Safety

- For outdoor use only

Product data

General Information	
Lamp colour code	Warm white
Light source replaceable	No
Driver included	No
Optical cover/lens type	PCC [Polycarbonate bowl/cover clear]
Luminaire light beam spread	110° x 110°
Control interface	-
Connection	Push-in connector 2-pole
Cable	2-metre cable with 10 nodes, 200 mm pitch and 2 connectors 2-pole
Protection class IEC	Safety class III (III)
Glow-wire test	Temperature 750 °C, duration 30 s
Flammability mark	F [For mounting on normally flammable surfaces]

CE mark	CE mark
Operating and Electrical	
Input Voltage	24 DC V
Input frequency	- Hz
Power factor (min.)	0.9
Controls and Dimming	
Dimmable	No
Mechanical and Housing	
Housing material	Polycarbonate
Optical cover/lens material	Polycarbonate

UniString

Overall length	48 mm
Overall width	15.5 mm
Overall height	60.1 mm
Colour	Black

Approval and Application

Ingress protection code	IP66 [Dust penetration-protected, jet-proof]
Mech. impact protection code	IK06 [1 J]

Initial Performance (IEC Compliant)

Initial luminous flux (system flux)	142 lm
Luminous flux tolerance	+/-10%
Initial LED luminaire efficacy	71 lm/W
Lamp colour temperature	3000 K
Colour Rendering Index	80
Initial chromaticity	4 SDCM
Initial input power	2 W

Power consumption tolerance	+/-10%
-----------------------------	--------

Application Conditions

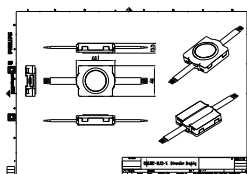
Ambient temperature range	-40 to +50 °C
---------------------------	---------------

Product Data

Full product code	911401753882
Order product name	BWS302 8LED 30K 24V S N10P20
Order code	911401753882
SAP numerator – quantity per pack	1
Numerator – packs per outer box	120
SAP material	911401753882
SAP net weight (piece)	0.070 kg



Dimensional drawing



BWS220 SmartBright LED

