



UniString

BWS300 4LED 27K 15V S DMX N16P12

UniString - 50 lm - 1 W - 2700 K

UniString is a surface-mounted, exterior-rated and compact-sized architectural LED direct view string that is designed for architectural and media façade outdoor lighting applications. The robust mechanical design, easy installation and unique optical lenses make UniString ideal for buildings/media facades, bridges, arenas, theatres, amusement parks and recreational centres. Available in white, monochromatic colours, RGB, RGBW and tunable white. Available in symmetrical and asymmetrical optical distributions with DMX control option to give architects and designers the freedom to explore a wide range of concepts and design with no limitations.

Warnings and Safety

- For outdoor use only

Product data

General Information	
Lamp colour code	Warm white
Light source replaceable	No
Driver included	No
Optical cover/lens type	PCC [Polycarbonate bowl/cover clear]
Luminaire light beam spread	110° x 110°
Control interface	Dynamix DMX
Connection	Push-in connector 5-pole (PI)
Cable	2-metre cable with 16 nodes, 125 mm pitch and 2 connectors 5-pole
Protection class IEC	Safety class III (III)
Glow-wire test	Temperature 750 °C, duration 30 s
Flammability mark	F [For mounting on normally flammable surfaces]

CE mark	CE mark
Operating and Electrical	
Input Voltage	15 DC V
Input frequency	- Hz
Power factor (min.)	0.9
Controls and Dimming	
Dimmable	Yes
Mechanical and Housing	
Housing material	Polycarbonate
Optical cover/lens material	Polycarbonate

UniString

Overall length	34 mm
Overall width	15.3 mm
Overall height	43.1 mm
Colour	Black

Approval and Application

Ingress protection code	IP66 [Dust penetration-protected, jet-proof]
Mech. impact protection code	IK06 [1 J]

Initial Performance (IEC Compliant)

Initial luminous flux (system flux)	50 lm
Luminous flux tolerance	+/-10%
Initial LED luminaire efficacy	50 lm/W
Lamp colour temperature	2700 K
Colour Rendering Index	80
Initial chromaticity	4 SDCM
Initial input power	1 W

Power consumption tolerance	+/-10%
-----------------------------	--------

Application Conditions

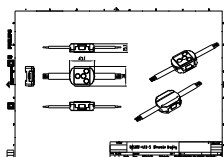
Ambient temperature range	-40 to +50 °C
Maximum dimming level	5% (1 to 10 V)

Product Data

Full product code	911401752942
Order product name	BWS300 4LED 27K 15V S DMX N16P12
Order code	911401752942
SAP numerator – quantity per pack	1
Numerator – packs per outer box	240
SAP material	911401752942
SAP net weight (piece)	0.034 kg



Dimensional drawing



BWS220 SmartBright LED

