



UniDot G2

BGS300 G2 12LEDLP 40K 24V DSC

222 lm - 3 W - 4000 K

UniDot G2 is a surface-mounted, exterior-rated and compact-sized architectural LED direct-view dot lighting luminaire that is designed for façade and outdoor lighting applications. The robust mechanical and unique optical covers make UniDot G2 ideal for building facades, bridges, theatres, amusement parks and recreational centres. Available in white, monochromatic colours, RGB, RGBW and tunable white. Three optical cover options and a DMX control interface is available to give architects and designers the freedom to explore a wide range of concepts and design with no limitations.

Product data

General Information	
Lamp colour code	Neutral white
Light source replaceable	No
Driver/power unit/transformer	PSU-E [Power supply unit external (PSU)]
Driver included	No
Optical cover/lens type	Polycarbonate bowl/cover spherical
Control interface	-
Connection	2 push-in connectors 2-pole
Cable	2 cables 0.3 m with connector 2-pole
Protection class IEC	Safety class III (III)
Flammability mark	F [For mounting on normally flammable surfaces]
CE mark	CE mark
Light source engine type	LED
Serviceability class	Class B, the luminaire is equipped with some serviceable parts (when applicable): driver, control

	units, surge-protection device, front cover and mechanical parts
--	--

Light Technical	
Standard tilt angle post-top	-
Standard tilt angle side entry	-

Operating and Electrical	
Input Voltage	24 DC V
Input frequency	- Hz
Power factor (min.)	0.9

Controls and Dimming	
Dimmable	No

Mechanical and Housing	
Housing material	Aluminum die-cast

UniDot G2

Optical cover/lens material	Polycarbonate
Mounting device	No [-]
Optical cover/lens shape	Hemispherical
Overall length	78 mm
Overall width	72 mm
Overall height	57 mm
Overall diameter	72 mm
Colour	Dark Grey

Approval and Application

Ingress protection code	IP66 [Dust penetration-protected, jet-proof]
Mech. impact protection code	IK06 [1 J]

Initial Performance (IEC Compliant)

Initial luminous flux (system flux)	222 lm
Luminous flux tolerance	+/-10%
Initial LED luminaire efficacy	74 lm/W
Lamp colour temperature	4000 K
Colour Rendering Index	80

Initial chromaticity	4 SDCM
Initial input power	3 W
Power consumption tolerance	+/-10%

Application Conditions

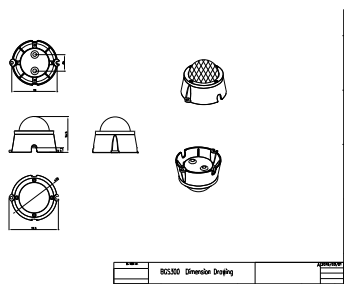
Ambient temperature range	-40 to +50 °C
---------------------------	---------------

Product Data

Full product code	911401752362
Order product name	BGS300 G2 12LEDLP 40K 24V DSC
Order code	911401752362
SAP numerator – quantity per pack	1
Numerator – packs per outer box	48
SAP material	911401752362
SAP net weight (piece)	0.212 kg



Dimensional drawing



BGS301/302 UNI Dot

