



UniStrip G4

BCP384 24LED RGBNW 220V A2 L50 DMX

UniStrip G4 - 1574 lm - 40 W - - K

UniStrip G4 is a surface-mounted, exterior-rated LED luminaire that is designed for façade and outdoor architectural lighting applications.;One family that fits all your needs, wall washing, grazing and also linear flood lighting.;The robust mechanical and unique optical designs make it ideal for illuminating buildings facades, bridges, overpasses and any application that requires a linear lighting solution.;Available in white, monochromatic colours, RGB, RGBW and tunable white and DMX control option available with up to 8 pixels (8IDs) to give architects and designers the freedom to explore a wide range of concepts and design with no limitations.

Warnings and Safety

- For outdoor use only

Product data

General Information	
Lamp colour code	Red, green, blue and white
Light source replaceable	No
Number of gear units	1 unit
Driver/power unit/transformer	PSU [Power supply unit]
Driver included	Yes
Optical cover/lens type	CLFT [Clear flat]
Luminaire light beam spread	16° x 35°
Control interface	Dynamic DMX
Connection	Flying leads/wires and 2 push-in connectors 4-pole
Cable	Cable 0.3 m without plug 3-pole + 2 cables 0.3 m with connector 4-pole
Protection class IEC	Safety class I (I)

Flammability mark	F [For mounting on normally flammable surfaces]
CE mark	CE mark
Optic type outdoor	Asymmetrical
Number of products on MCB (16 A type B)	4
Light source engine type	LED
Serviceability class	Class B, the luminaire is equipped with some serviceable parts (when applicable): driver, control units, surge-protection device, front cover and mechanical parts

Light Technical

Standard tilt angle post-top	-
------------------------------	---

UniStrip G4

Standard tilt angle side entry	-
--------------------------------	---

Operating and Electrical

Input Voltage	220 to 240 V
Input frequency	50 to 60 Hz
Inrush current	60 A
Inrush time	0.85 ms
Power factor (min.)	0.9

Controls and Dimming

Dimmable	Yes
----------	-----

Mechanical and Housing

Housing material	Aluminum extruded
Optic material	Polymethyl methacrylate
Optical cover/lens material	Tempered glass
Fixation material	Aluminium
Mounting device	MBA [Mounting bracket adjustable]
Optical cover/lens shape	Flat
Optical cover/lens finish	Clear
Overall length	500 mm
Overall width	80 mm
Overall height	105 mm
Colour	Dark Grey

Approval and Application

Ingress protection code	IP66 [Dust penetration-protected, jet-proof]
-------------------------	-----------------------------------------------

Mech. impact protection code	IK06 [1 J]
------------------------------	-------------

Initial Performance (IEC Compliant)

Initial luminous flux (system flux)	1574 lm
Luminous flux tolerance	+/-10%
Initial LED luminaire efficacy	39 lm/W
Lamp colour temperature	- K
Colour Rendering Index	-
Initial input power	40 W
Power consumption tolerance	+/-10%

Application Conditions

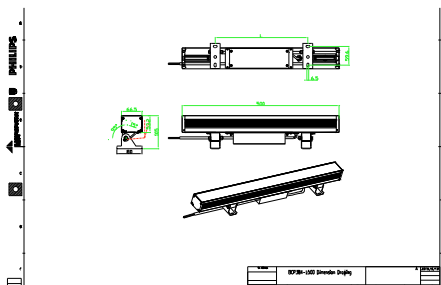
Ambient temperature range	-40 to +50 °C
Maximum dimming level	10%

Product Data

Full product code	911401751302
Order product name	BCP384 24LED RGBNW 220V A2 L50 DMX
Order code	911401751302
SAP numerator – quantity per pack	1
Numerator – packs per outer box	4
SAP material	911401751302
SAP net weight (piece)	2.399 kg



Dimensional drawing



BCP280/383/384/385 UNiStrip G3

UniStrip G4

