

UniStrip G4

BCP383 24LED 40K 220V 40 L100 DMX

UniStrip G4 - 3140 lm - 50 W - 4000 K

UniStrip G4 is a surface-mounted, exterior-rated LED luminaire that is designed for façade and outdoor architectural lighting applications.;One family that fits all your needs, wall washing, grazing and also linear flood lighting.;The robust mechanical and unique optical designs make it ideal for illuminating buildings facades, bridges, overpasses and any application that requires a linear lighting solution.;Available in white, monochromatic colours, RGB, RGBW and tunable white and DMX control option available with up to 8 pixels (8IDs) to give architects and designers the freedom to explore a wide range of concepts and design with no limitations.

Warnings and Safety

- For outdoor use only

Product data

General Information		Flammability mark	
Lamp colour code	Neutral white		F [For mounting on normally flammable surfaces]
Light source replaceable	No	CE mark	CE mark
Number of gear units	1 unit	Optic type outdoor	Medium beam angle 40°
Driver/power unit/transformer	PSU [Power supply unit]	Number of products on MCB (16 A type B)	4
Driver included	Yes	Light source engine type	LED
Optical cover/lens type	GT [Tempered glass]	Serviceability class	Class B, the luminaire is equipped with some serviceable parts (when applicable): driver, control units, surge-protection device, front cover and mechanical parts
Luminaire light beam spread	40° x 40°		
Control interface	Dynamix DMX		
Connection	Flying leads/wires and 2 push-in connectors 4-pole		
Cable	Cable 0.3 m without plug 3-pole + 2 cables 0.3 m with connector 4-pole	Light Technical	
Protection class IEC	Safety class I (I)	Standard tilt angle post-top	-

UniStrip G4

Standard tilt angle side entry	-
--------------------------------	---

Operating and Electrical

Input Voltage	220 to 240 V
Input frequency	50 to 60 Hz
Inrush current	60 A
Inrush time	0.45 ms
Power factor (min.)	0.9

Controls and Dimming

Dimmable	Yes
----------	-----

Mechanical and Housing

Housing material	Aluminum extruded
Optic material	Polymethyl methacrylate
Optical cover/lens material	Glass
Fixation material	Aluminium
Mounting device	MBA [Mounting bracket adjustable]
Optical cover/lens shape	Flat
Optical cover/lens finish	Clear
Overall length	1000 mm
Overall width	45 mm
Overall height	105 mm
Colour	Dark Grey

Approval and Application

Ingress protection code	IP66 [Dust penetration-protected, jet-proof]
-------------------------	---

Mech. impact protection code	IK06 [1 J]
------------------------------	-------------

Initial Performance (IEC Compliant)

Initial luminous flux (system flux)	3140 lm
Luminous flux tolerance	+/-10%
Initial LED luminaire efficacy	63 lm/W
Lamp colour temperature	4000 K
Colour Rendering Index	80
Initial chromaticity	4 SDCM
Initial input power	50 W
Power consumption tolerance	+/-10%

Application Conditions

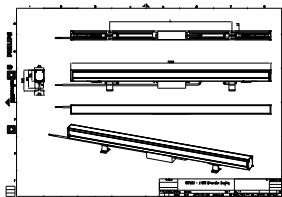
Ambient temperature range	-40 to +50 °C
Maximum dimming level	10%

Product Data

Full product code	911401750972
Order product name	BCP383 24LED 40K 220V 40 L100 DMX
Order code	911401750972
SAP numerator – quantity per pack	1
Numerator – packs per outer box	6
SAP material	911401750972
SAP net weight (piece)	3.199 kg



Dimensional drawing



BCP280/383/384/385 UNiStrip G3

UniStrip G4

