



Product Description

MHN-TD

Double-envelope, single- or double-ended Metal halide lamps

Benefits

- All types are UV-Block for reduced health and fading risks

Features

- Quartz discharge tube containing high-pressure mercury and a mixture of dysprosium, holmium and thulium halides (MHN-TD) or tin iodide (MHW-TD), with sodium and thallium added for colour correction and arc stabilisation
- Double-ended lamps housed in a tubular clear UV-Block quartz evacuated outer envelope
- Restricted burning position

Application

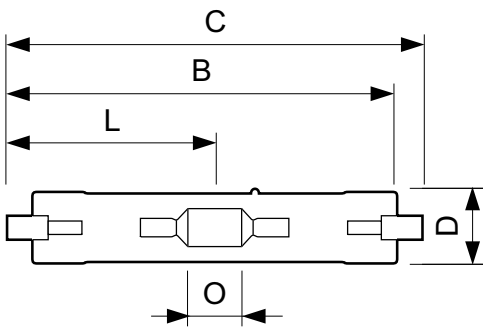
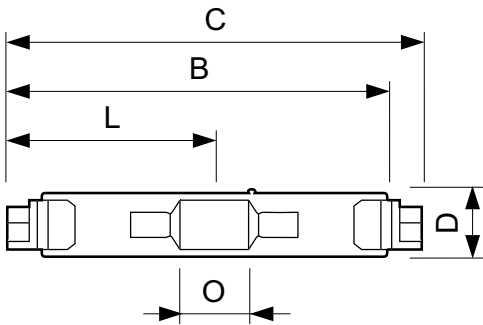
- Indoors - accent lighting, general lighting in downlighters, e.g. in shops and malls
- Downlighters, uplighters and wall-washers, e.g. in shops and malls
- Outdoors - floodlighting monuments, facades and billboards

Warnings and Safety

- Use only in totally enclosed luminaire, even during testing (IEC61167, IEC 62035, IEC60598)
- The luminaire must be able to contain hot lamp parts if the lamp ruptures
- Control gear must include end-of-life protection (IEC61167, IEC 62035)
- A lamp breaking is extremely unlikely to have any impact on your health. If a lamp breaks, ventilate the room for 30 minutes and remove the parts, preferably with gloves. Put them in a sealed plastic bag and take it to your local waste facilities for recycling. Do not use a vacuum cleaner.

MHN-TD

Dimensional drawing



Product	D (max)	D	O	C (max)
MHN-TD 250W/842 FC2 1CT/12	27.5 mm	1.08 in	27 mm	161.6 mm

Product	D (max)	D	O	C (max)
MHN-TD 70W/842 RX7s 1CT/12	19.5 mm	0.75 in	7.7 mm	117.6 mm
MHN-TD 150W/842 RX7s 1CT/12	23.0 mm	0.89 in	17.8 mm	135.4 mm
MHN-TD 70W/730 RX7s 1CT/12	19.5 mm	0.75 in	7.7 mm	117.6 mm
MHN-TD 150W/730 RX7s 1CT/12	23.0 mm	0.89 in	17.8 mm	135.4 mm

Controls and Dimming

Dimmable No

General Information

Life To 5% Failures (Min) 4000 h

Life To 5% Failures (Nom) 5000 h

Operating Position P45

Mechanical and Housing

Bulb Finish Clear

Approval and Application

Order Code	Full Product Name	Energy Consumption kWh/1000 h	Mercury (Hg) Content (Max)	Mercury (Hg) Content (Nom)
928070205190	MHN-TD 70W/842 RX7s 1CT/12	77 kWh	11 mg	11 mg
928076505190	MHN-TD 150W/842 RX7s 1CT/12	155 kWh	12.3 mg	12.3 mg
928482400092	MHN-TD 70W/730 RX7s 1CT/12	77 kWh	13.4 mg	13.4 mg

Order Code	Full Product Name	Energy Consumption kWh/1000 h	Mercury (Hg) Content (Max)	Mercury (Hg) Content (Nom)
928482500092	MHN-TD 150W/730 RX7s 1CT/12	155 kWh	18 mg	18 mg
928078605121	MHN-TD 250W/842 FC2 1CT/12	277 kWh	-	16 mg

Operating and Electrical

MHN-TD

Order Code	Full Product Name	Lamp Current (EM) (Nom)	Voltage (Max)	Voltage (Min)	Voltage (Nom)	Power (Rated) (Nom)
928070205190	MHN-TD 70W/842 RX7s 1CT/12	1.0 A	100 V	80 V	90 V	77 W
928076505190	MHN-TD 150W/842 RX7s 1CT/12	1.8 A	108 V	88 V	98 V	155 W
928482400092	MHN-TD 70W/730 RX7s 1CT/12	0.98 A	98 V	78 V	90 V	77 W
928482500092	MHN-TD 150W/730 RX7s 1CT/12	1.8 A	106 V	86 V	96 V	155 W
928078605121	MHN-TD 250W/842 FC2 1CT/12	3 A	110 V	85 V	95 V	250.0 W

General Information

Order Code	Full Product Name	Cap-Base	Life To 20% Failures (Min)	Life To 20% Failures (Nom)	Life To 50% Failures (Min)	Life To 50% Failures (Nom)
928070205190	MHN-TD 70W/842 RX7s 1CT/12	RX7S	6500 h	8000 h	8500 h	10500 h
928076505190	MHN-TD 150W/842 RX7s 1CT/12	RX7S	6500 h	8000 h	8500 h	10500 h
928482400092	MHN-TD 70W/730 RX7s 1CT/12	RX7S	5800 h	7000 h	7500 h	9000 h
928482500092	MHN-TD 150W/730 RX7s 1CT/12	RX7S	6500 h	8000 h	8500 h	10500 h
928078605121	MHN-TD 250W/842 FC2 1CT/12	FC2	5800 h	7000 h	7500 h	9000 h

Luminaire Design Requirements

Order Code	Full Product Name	Bulb Temperature (Max)	Order Code	Full Product Name	Bulb Temperature (Max)
928070205190	MHN-TD 70W/842 RX7s 1CT/12	500 °C	928482500092	MHN-TD 150W/730 RX7s 1CT/12	650 °C
928076505190	MHN-TD 150W/842 RX7s 1CT/12	650 °C	928078605121	MHN-TD 250W/842 FC2 1CT/12	650 °C
928482400092	MHN-TD 70W/730 RX7s 1CT/12	500 °C			

Light Technical (1/3)

Order Code	Full Product Name	Chromaticity	Chromaticity	Colour		Correlated Colour	Colour	Lumen Maintenance
		Coordinate X (Nom)	Coordinate Y (Nom)	Code	Colour Designation	Temperature (Nom)	Rendering Index (Nom)	
928070205190	MHN-TD 70W/842 RX7s 1CT/12	0.371	0.366	842	Cool White (CW)	4200 K	75	40 %
928076505190	MHN-TD 150W/842 RX7s 1CT/12	0.371	0.366	842	Cool White (CW)	4200 K	81	60 %
928482400092	MHN-TD 70W/730 RX7s 1CT/12	0.434	0.398	730	Warm white (WW)	3000 K	65	45 %
928482500092	MHN-TD 150W/730 RX7s 1CT/12	0.434	0.398	730	Warm white (WW)	3000 K	67	50 %
928078605121	MHN-TD 250W/842 FC2 1CT/12	370	365	842	Cool White (CW)	4200 K	85	50 %

Light Technical (2/3)

Order Code	Full Product Name	Lumen	Lumen	Lumen	Lumen	Lumen	Luminous	Luminous	Luminous	
		Maintenance 10000 h (Nom)	Maintenance 2000 h (Min)	Maintenance 2000 h (Nom)	Maintenance 5000 h (Min)	Maintenance 5000 h (Nom)	Efficacy (rated) (Min)	Efficacy (rated) (Nom)	Luminous Flux (Nom)	Luminous Flux (Rated) (Min)
928070205190	MHN-TD 70W/842 RX7s 1CT/12	75 %	79 %	85 %	68 %	80 %	67 lm/W	75 lm/W	5800 lm	5220 lm
928076505190	MHN-TD 150W/842 RX7s 1CT/12	70 %	74 %	80 %	68 %	75 %	73 lm/W	81 lm/W	12500 lm	11250 lm

MHN-TD

Order Code	Full Product Name	Lumen Maintenance 10000 h (Nom)	Lumen Maintenance 2000 h (Min)	Lumen Maintenance 2000 h (Nom)	Lumen Maintenance 5000 h (Min)	Lumen Maintenance 5000 h (Nom)	Luminous Efficacy (rated) (Min)	Luminous Efficacy (rated) (Nom)	Luminous Flux (Nom)	Luminous Flux (Rated) (Min)
928482400092	MHN-TD 70W/730 RX7s 1CT/12	55 %	59 %	65 %	53 %	60 %	67 lm/W	75 lm/W	5800 lm	5220 lm
928482500092	MHN-TD 150W/730 RX7s 1CT/12	60 %	69 %	75 %	58 %	65 %	81 lm/W	90 lm/W	13400 lm	12510 lm
928078605121	MHN-TD 250W/842 FC2 1CT/12	60 %	69 %	75 %	63 %	70 %	-	80 lm/W	-	18000 lm

Light Technical (3/3)

Order Code	Full Product Name	Luminous Flux (Rated) (Nom)
928070205190	MHN-TD 70W/842 RX7s 1CT/12	5800 lm
928076505190	MHN-TD 150W/842 RX7s 1CT/12	12500 lm
928482400092	MHN-TD 70W/730 RX7s 1CT/12	5800 lm

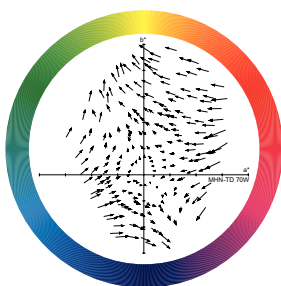
Order Code	Full Product Name	Luminous Flux (Rated) (Nom)
928482500092	MHN-TD 150W/730 RX7s 1CT/12	13900 lm
928078605121	MHN-TD 250W/842 FC2 1CT/12	20000 lm

Mechanical and Housing

Order Code	Full Product Name	Bulb Shape
928070205190	MHN-TD 70W/842 RX7s 1CT/12	TD
928076505190	MHN-TD 150W/842 RX7s 1CT/12	TD
928482400092	MHN-TD 70W/730 RX7s 1CT/12	TD

Order Code	Full Product Name	Bulb Shape
928482500092	MHN-TD 150W/730 RX7s 1CT/12	TD
928078605121	MHN-TD 250W/842 FC2 1CT/12	T27

Colour Rendering Diagrams



LDCR_MHN-TD_70W-Colour rendering diagram

